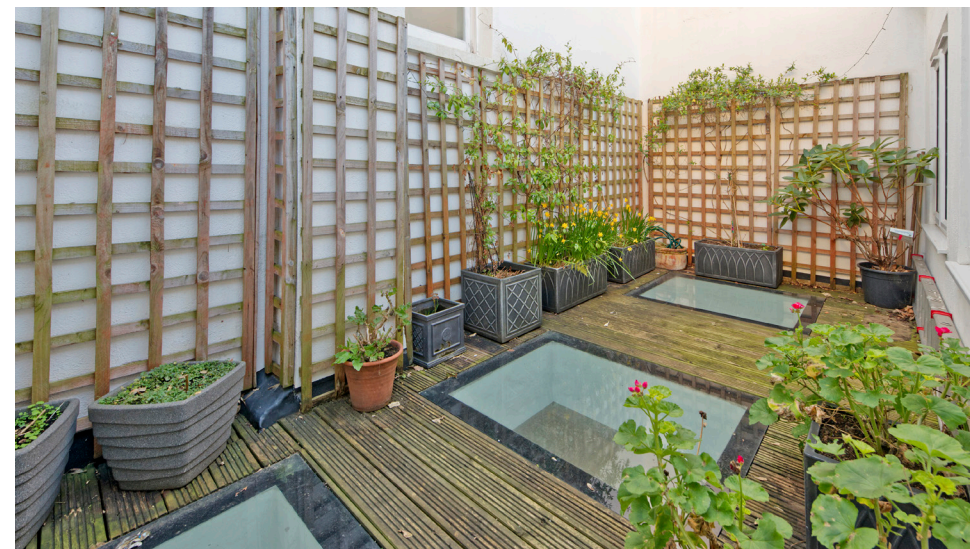
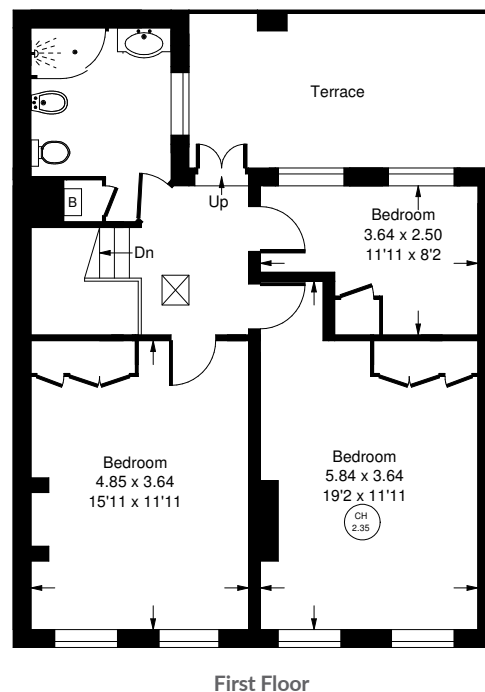
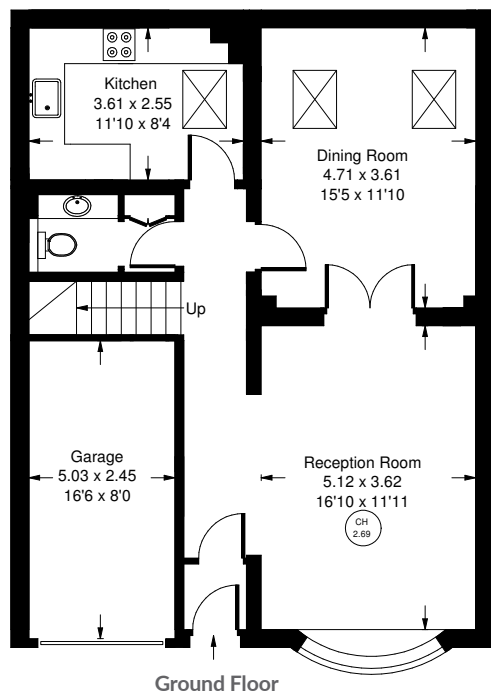




CORNWALL MEWS

Approx. Gross Internal Area = 125.9 sq m / 1355 sq ft
 Garage = 12.3 m sq / 131 sq ft
 Total = 138.1 m² / 1486 ft²



Cornwall Mews West, SW7 - Freehold

Local Authority **Royal Borough of Kensington & Chelsea**

Situated within a charming cobbled mews this well-proportioned mews house provides circa 1,486 square feet of space over just two floors. On the ground floor there is a garage, reception room, dining room, kitchen and cloakroom/ WC. On the first floor there are three bedrooms a family bathroom and access to the roof garden.

- Three bedrooms
- Garage
- Roof Terrace
- Council Tax Band: G



Whilst every attempt has been made to ensure the accuracy of the floor plan, measurements are approximate and not to scale. No guarantee is given on the total square footage of the property quoted on the plan. Figures given are for guidance. Plan is for illustration purposes only, not to be used for valuations.