

CHAPEL STREET







## Chapel Street, Belgravia, SW1X

Stunning townhouse in the heart of Belgravia which seamlessly blends Georgian elegance with modern design. The property benefits from high ceilings, period features and a lovely garden, as well as superb leisure facilities, including a heated swimming pool, spa and fully-equipped gym. The house has a lift and is air-conditioned throughout. There is an impressive formal dining room on the ground floor complimented by a superb kitchen dining room and on the first floor a beautiful double reception room with floor-to-ceiling windows and a separate study with access to a terrace. The second floor provides for a stunning master suite with further bedroom suites on the top floor. There are two further bedroom suites and a staff kitchen in the lower ground floor as well as a cinema room.













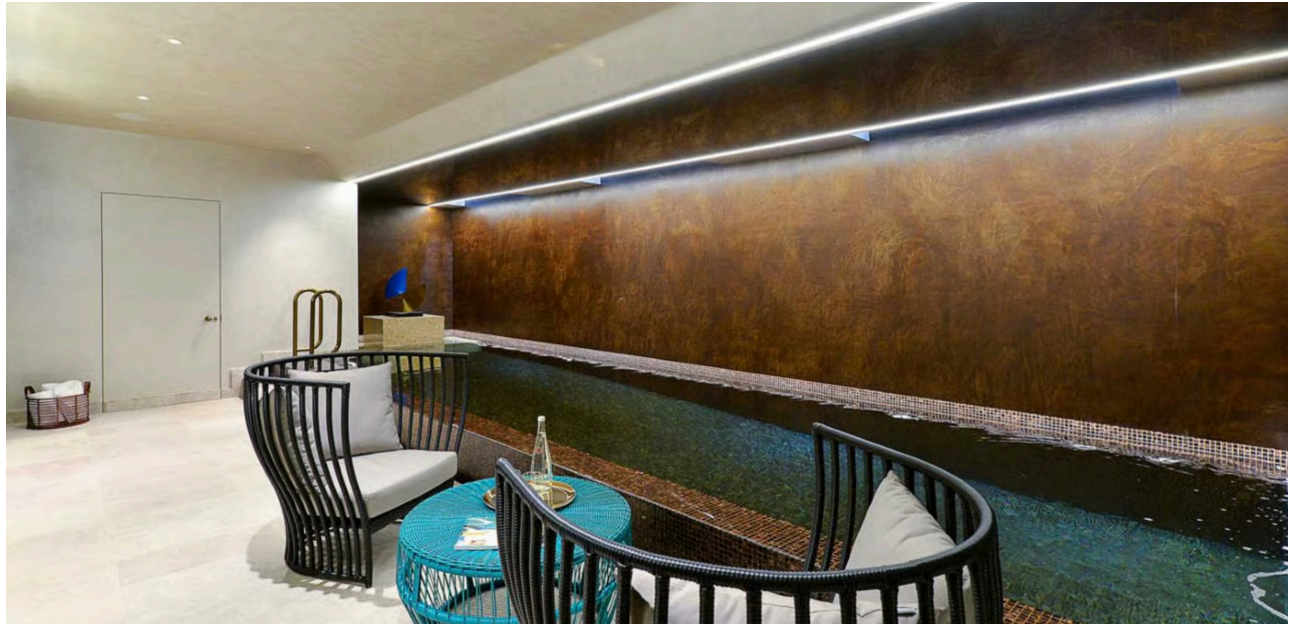














Approx. Gross Internal Area  
= 629.23 sq m / 6773 sq ft  
(Excluding Vault 1 & Plant Room 1)

Approx. Gross Internal Area of Vault 1  
= 4.83 sq m / 52 sq ft

Approx. Gross Internal Area of Plant Room 1  
= 7.86 sq m / 85 sq ft

Approx. Gross External Area  
= 94.02 sq m / 1012 sq ft



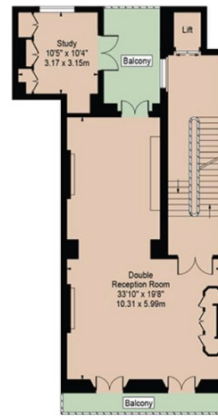
Basement



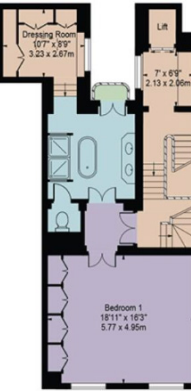
Third Floor



Ground Floor



First Floor



Second Floor

# Chapel Street, Belgravia, SW1X

Local Authority **City of Westminster**

## Lower Ground Floor

- Kitchen
- Staff room
- Study
- Garden
- Cinema room
- Bedroom suite
- Plant room

## Ground Floor

- Kitchen/Breakfast room
- Dining room
- Garden
- Bathroom
- Balcony

- Lift
- Council tax band: H
- EPC rating: D

## First Floor

- Double reception room
- Study
- Balcony

## Second Floor

- Three bedrooms
- Two bathrooms

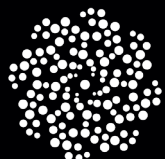
## Third Floor

- Principal suite
- Dressing room

## Basement

- Swimming pool
- Plant room
- Gym
- Sauna & steam room





**MOUNTGRANGE**  
PRIVATE OFFICE

27 Kensington Park Road, London W11 2EU

[liz@mountgrangeheritage.co.uk](mailto:liz@mountgrangeheritage.co.uk)

[teresa@mountgrangeheritage.co.uk](mailto:teresa@mountgrangeheritage.co.uk)

[julia@mountgrangeheritage.co.uk](mailto:julia@mountgrangeheritage.co.uk)