

CASSON SQUARE





One Casson Square, Southbank Place, London SE1

Spectacular apartment on the thirteenth floor of this brand new development on the Southbank just a two minute walk from the London Eye, Festival Hall and Waterloo Station. There are panoramic views across the Thames with views of the Shard and St Pauls. The flat has an indulgent master bedroom with ample storage and benefits from triple glazed windows and an air cooling system. One Casson Square has a dedicated security provision including a 24 hour concierge. The development offers site wide CCTV security with centralised monitoring and 24 hour security staff. The private spa facilities are exceptional.





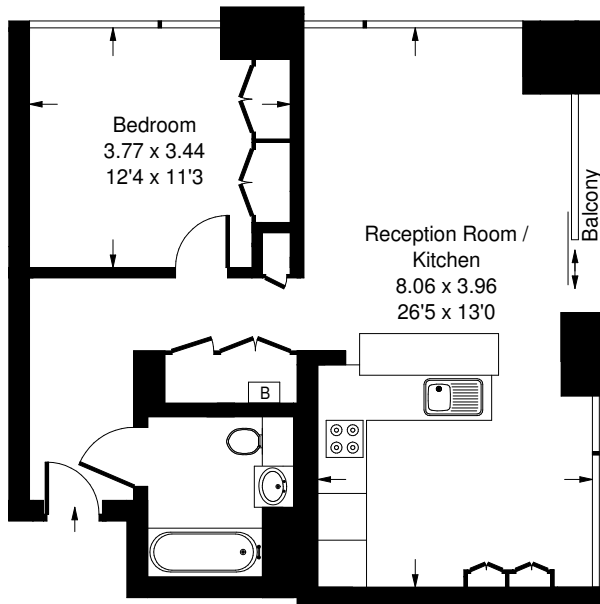




One Casson Square, Southbank Place, London SE1 - Leasehold

Local Authority **London Borough of Lambeth**

- One Bedroom
- One Bathroom
- Residents' Health Club and Spa
- 24 Hour Concierge and Security Staff
- 13th Floor Apartment
- EPC Rating: B



Approx. Gross Internal Area
= 59.9 m² / 645 ft²

Thirteenth Floor



Whilst every attempt has been made to ensure the accuracy of the floor plan, measurements are approximate and not to scale. No guarantee is given on the total square footage of the property quoted on the plan. Figures given are for guidance. Plan is for illustration purposes only, not to be used for valuations.

LONDON OFFICES

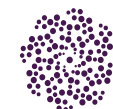
Kensington • North Kensington • Notting Hill 020 7221 2277

COUNTRY OFFICE

Cotswolds 01285 707222

mountgrangeheritage.co.uk

hello@mountgrangeheritage.co.uk



MOUNTGRANGE
HERITAGE