



DAMAC TOWER



Bondway, Lambeth, SW8

A sophisticated apartment with sweeping panoramic views across London which offers generous open plan reception space, three double bedrooms, three bathrooms and a glass-enclosed winter garden which frames the skyline. Set on the twentieth floor, this remarkable home is filled with natural light and offers floor-to-ceiling vistas of the River Thames, the Houses of Parliament, the London Eye, The Shard, The Gherkin and even the Wembley Arch. Spanning over 1,300 sq ft and finished to an exceptional standard, the apartment features engineered wooden flooring, a beautifully designed dual-aspect kitchen and living space, recessed LED lighting and bespoke Versace wall finishes. The contemporary kitchen centres around a chef's island and includes premium integrated appliances such as a wine cooler, dishwasher and coffee machine. Residents of the iconic DAMAC Tower enjoy world-class amenities, including a 24-hour concierge, state-of-the-art gym, swimming pool and exclusive Versace-designed communal spaces, offering an elevated living experience in the heart of London.















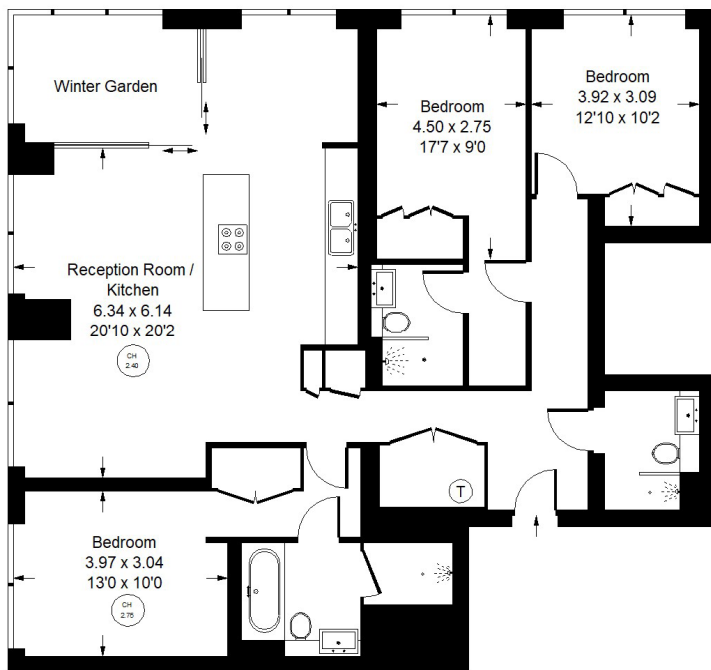
Residents of the iconic DAMAC Tower enjoy world-class amenities, including a 24-hour concierge, state-of-the-art gym, swimming pool and exclusive Versace-designed communal spaces, offering an elevated living experience in the heart of London.

Bondway, Lambeth, SW8 - Leasehold

Local Authority **London Borough of Lambeth**

- Open plan living space
- Winter garden
- Three double bedrooms
- Three bathrooms
- AC and underfloor heating
- Twentieth floor
- Lift
- 24 hour concierge
- Residents' health club & spa
- EPC rating B
- 1396 sq ft

SOME PICTURES IN THIS BROCHURE HAVE BEEN VIRTUALLY STAGED



Approx. Gross Internal Area
= 129.7 sq m / 1396 sq ft

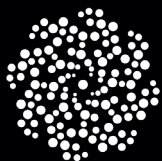


Twentieth Floor



Whilst every attempt has been made to ensure the accuracy of the floor plan, measurements are approximate and not to scale. No guarantee is given on the total square footage of the property quoted on the plan. Figures given are for guidance. Plan is for illustration purposes only, not to be used for valuations.





MOUNTGRANGE
PRIVATE OFFICE

27 Kensington Park Road, London W11 2EU
liz@mountgrangeheritage.co.uk
teresa@mountgrangeheritage.co.uk
julia@mountgrangeheritage.co.uk