

# LEXHAM GARDENS





## Lexham Gardens, W8

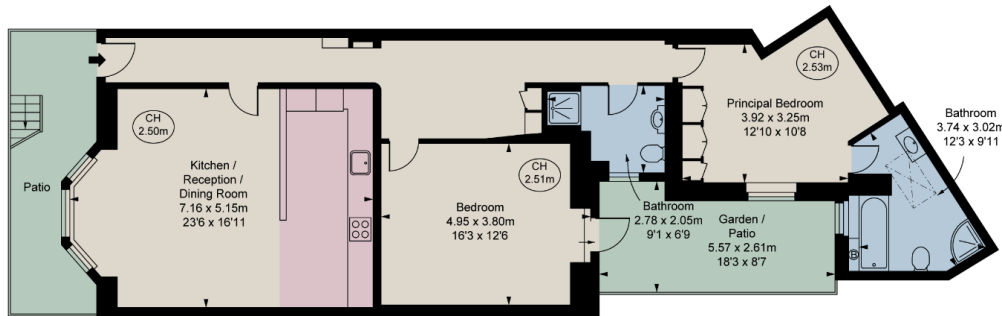
The property is located on the lower ground floor of a period building. The apartment has a spacious living room with a specially designed Tom Howley open-plan kitchen, a corridor with built-in utility appliances, two double bedrooms both with fitted wardrobes, two elegant bathrooms one being an ensuite and a private patio. The property has a slick design throughout and the living room and master bedroom are equipped with air conditioning. Lexham Gardens is conveniently located for all amenities of High Street Kensington and Gloucester Road.







Approx. Gross Internal Area = 101.33 sq m / 1091 sq ft



Lower Ground Floor

## Lexham Gardens, W8 - Share of Freehold

Local Authority **Royal Borough of Kensington & Chelsea**

- Two double bedrooms
- Two bathrooms
- Large reception
- Extra utility room
- Patio
- High ceilings
- Council Tax Band: G
- EPC rating: C
- Remaining Lease: 956 years



Whilst every attempt has been made to ensure the accuracy of the floor plan, measurements are approximate and not to scale. No guarantee is given on the total square footage of the property quoted on the plan. Figures given are for guidance. Plan is for illustration purposes only, not to be used for valuations.

### LONDON OFFICES

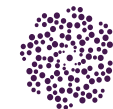
Notting Hill • North Kensington • Kensington 020 8960 0181

### COUNTRY OFFICE

Cotswolds 01285 707222

[mountgrangeheritage.co.uk](https://mountgrangeheritage.co.uk)

[hello@mountgrangeheritage.co.uk](mailto:hello@mountgrangeheritage.co.uk)



**MOUNTGRANGE**  
HERITAGE