



Argyll Court

86

84

82

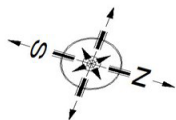
ARGYLL COURT



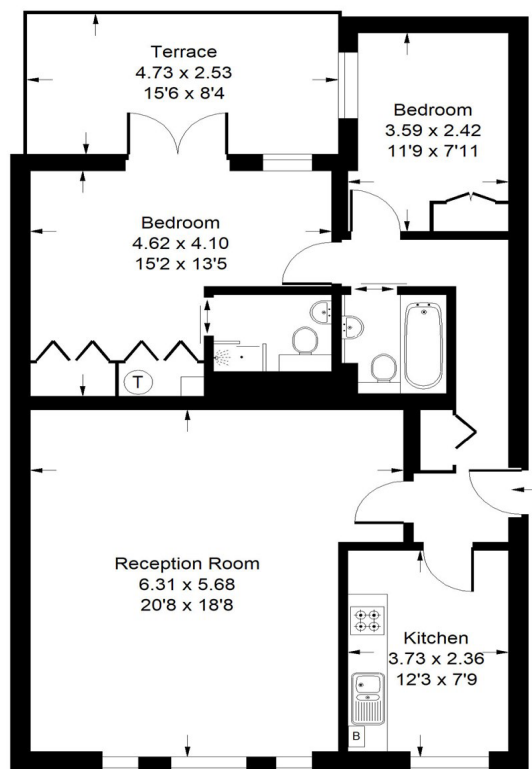
Argyll Court, Lexham Gardens, W8

A beautifully refurbished apartment which enjoys stunning views over award winning communal gardens and the additional benefit of a large west-facing roof terrace. Situated on the third floor (with lift) in this popular building this two bedroom flat has an impressive reception room, separate modern kitchen and two bathrooms. The property is situated in a prime position and with the benefit of communal garden access and caretaker. Lexham Gardens is a quiet residential street within a short walk of the amenities of Stratford Village and 5-10 mins walking distance of High Street Kensington Station. (District & Circle lines) and Earls Court Station (Piccadilly & District lines).





Approx. Gross Internal Area
= 83.7 sq m / 901 sq ft



Third Floor



Argyll Court, Lexham Gardens, W8 - Leasehold Local Authority **Royal Borough of Kensington & Chelsea**

- Two bedroom
- Two bathroom (one en suite)
- Private balcony and communal garden
- Lift access
- Close to Gloucester Road and High Street Kensington
- Council Tax Band: G
- Remaining Lease: 946 years



Whilst every attempt has been made to ensure the accuracy of the floor plan, measurements are approximate and not to scale. No guarantee is given on the total square footage of the property quoted on the plan. Figures given are for guidance. Plan is for illustration purposes only, not to be used for valuations.

LONDON OFFICES

Notting Hill • North Kensington • Kensington 020 8960 0181

COUNTRY OFFICE

Cotswolds 01285 707222

mountgrangeheritage.co.uk

hello@mountgrangeheritage.co.uk



MOUNTGRANGE
HERITAGE