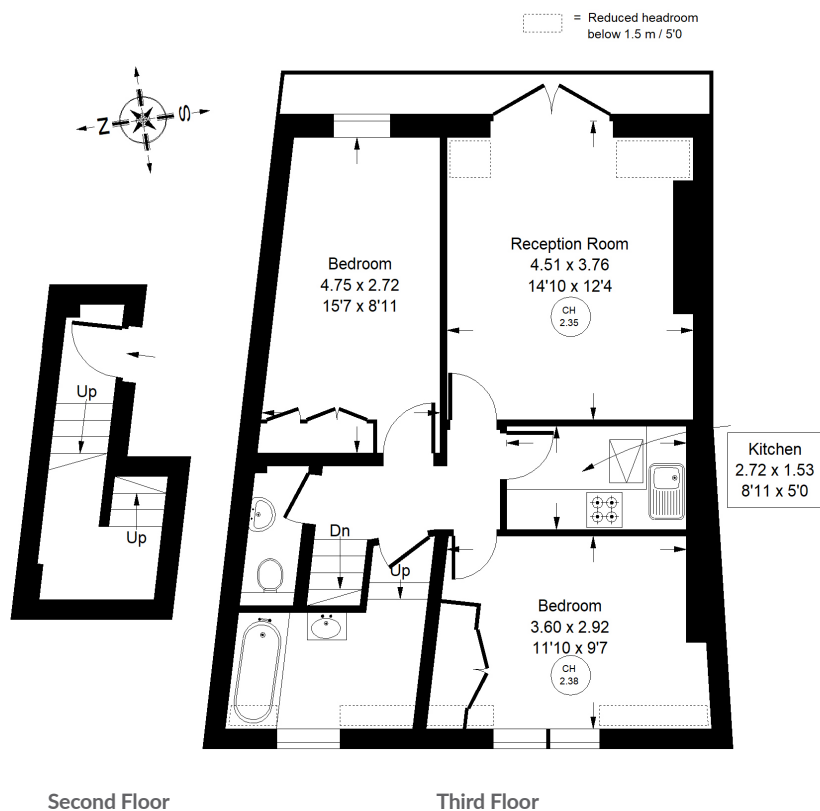




EARDLEY CRESCENT

Approx. Gross Internal Area
= 64.7 sq m / 696 sq ft



Eardley Crescent, SW5 - Leasehold

Local Authority **Royal Borough of Kensington and Chelsea**

A bright and peaceful two bedroom apartment situated on the west side of Eardley Crescent. This well-presented property occupies the top floor (entrance at second floor) of a handsome Victorian converted house. The property comprises a reception room leading onto a small terrace, separate kitchen, two double bedrooms and a bathroom.

- Two double bedrooms
- Two bathrooms
- Remaining Lease: 149 years
- EPC Rating: D



Whilst every attempt has been made to ensure the accuracy of the floor plan, measurements are approximate and not to scale. No guarantee is given on the total square footage of the property quoted on the plan. Figures given are for guidance. Plan is for illustration purposes only, not to be used for valuations.