

EGERTON GARDENS





Egerton Gardens, SW3

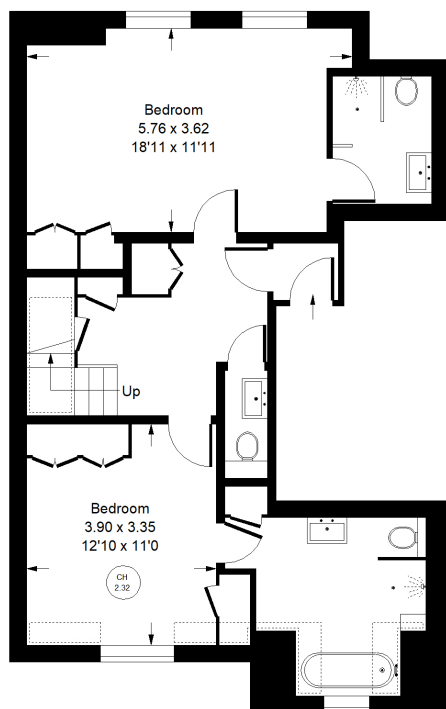
An immaculate penthouse duplex (with lift) in a prime location with air conditioning, a private roof terrace and access to communal gardens. This outstanding apartment has been fully renovated by the current owner and offers a perfect balance of well-configured accommodation over the fourth and fifth floors. There are two fabulous bedroom suites, both with extensive storage, a separate cloakroom/WC. The top floor is devoted to an expansive living space with stunning views to the front and rear and access to the south-east facing roof terrace which has tranquil views over the communal gardens. Egerton Gardens is located between Chelsea and Knightsbridge with easy access into central London, Hyde Park and the many surrounding shops and restaurants.



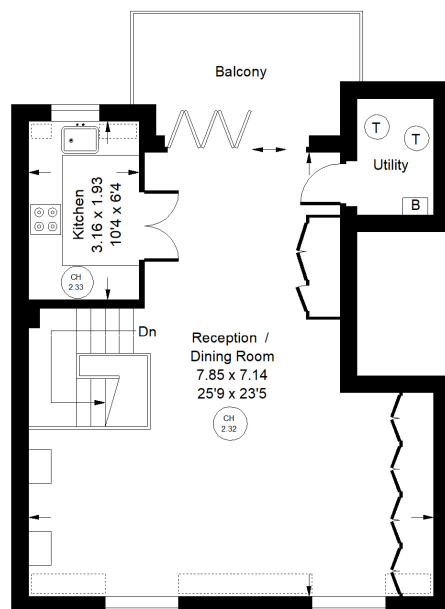




Approx. Gross Internal Area
= 117.7 sq m / 1267 sq ft



Fourth Floor



Fifth Floor



Egerton Gardens, SW3 - Leasehold

Local Authority - **Royal Borough of Kensington & Chelsea**

- Penthouse duplex with lift
- Two large bedroom suites
- Private balcony
- Communal gardens
- Air conditioning
- Fabulous views
- EPC Rating: D
- Council Tax Band: H



Whilst every attempt has been made to ensure the accuracy of the floor plan, measurements are approximate and not to scale. No guarantee is given on the total square footage of the property quoted on the plan. Figures given are for guidance. Plan is for illustration purposes only, not to be used for valuations.

LONDON OFFICES

North Kensington • Notting Hill • Kensington 020 7937 9976

COUNTRY OFFICE

Cotswolds 01285 707222

mountgrangeheritage.co.uk

hello@mountgrangeheritage.co.uk



MOUNTGRANGE
HERITAGE