



PEMBROKE ROAD, W8

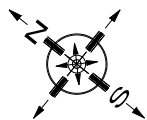




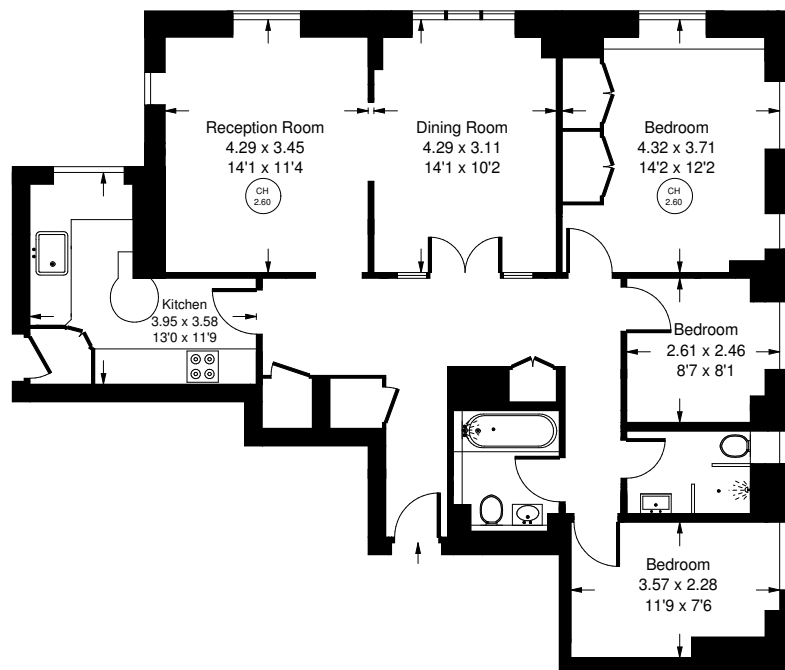
## Marlborough Court, Pembroke Road, W8

A beautifully presented three bedroom top floor apartment (with lift) located within this purpose-built portered building. This dual-aspect apartment is flooded with natural light and provides circa 1,030 square feet of accommodation. The entrance hall gives access to the accommodation which includes; reception room, separate dining room, kitchen, principal bedroom with excellent fitted storage, two further smaller bedrooms, shower room and a bathroom. Marlborough Court is perfectly placed for the wide range of amenities on Earls Court Road and Kensington High Street as well as being a short walk to the beautiful spaces of Holland Park.





Approx. Gross Internal Area  
= 95.7 sq m / 1030 sq ft



Fifth Floor



## Marlborough Court, Pembroke Road, W8 - Leasehold

Local Authority **Royal Borough of Kensington & Chelsea**

- Three bedrooms
- Two bathrooms
- Porter
- Lift
- Communal gardens
- No onward chain
- EPC Rating: D
- Council Tax Band: F



Whilst every attempt has been made to ensure the accuracy of the floor plan, measurements are approximate and not to scale. No guarantee is given on the total square footage of the property quoted on the plan. Figures given are for guidance. Plan is for illustration purposes only, not to be used for valuations.

### LONDON OFFICES

Notting Hill • North Kensington • Kensington 020 8960 0181

### COUNTRY OFFICE

Cotswolds 01285 707222

[mountgrangeheritage.co.uk](https://mountgrangeheritage.co.uk)

[hello@mountgrangeheritage.co.uk](mailto:hello@mountgrangeheritage.co.uk)



**MOUNTGRANGE**  
HERITAGE