

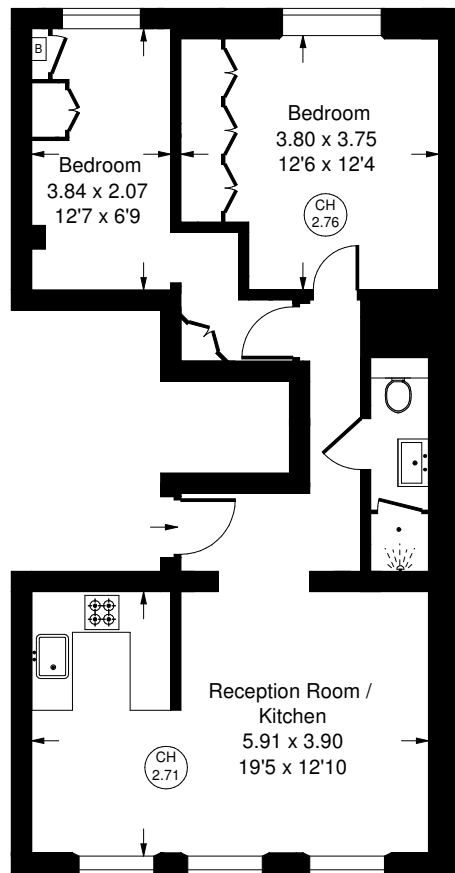


CORNWALL GARDENS



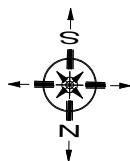
Cornwall Gardens, SW7

A bright and well presented two bedroom apartment overlooking one of South Kensington's most desired communal garden square. This modern apartment is located on the third floor (with lift) and comprises a reception room with views over the quiet end of Cornwall Gardens, open-plan living, modern kitchen, principal bedroom with fitted wardrobes, guest bedroom and shower room. The property is offered for sale with a long lease and access to communal gardens, subject to an application and membership fee.



Third Floor

Approx. Gross Internal Area
= 56.8 sq m / 611sq ft



Cornwall Gardens SW7 - Leasehold

Local Authority **Royal Borough of Kensington & Chelsea**

- Two bedrooms
- Third floor with lift
- Magnificent views
- Prime location
- EPC Rating: C
- Council Tax Band: E



Whilst every attempt has been made to ensure the accuracy of the floor plan, measurements are approximate and not to scale. No guarantee is given on the total square footage of the property quoted on the plan. Figures given are for guidance. Plan is for illustration purposes only, not to be used for valuations.

LONDON OFFICES
Notting Hill • North Kensington • Kensington 020 8960 0181

COUNTRY OFFICE
Cotswolds 01285 707222

mountgrangeheritage.co.uk
hello@mountgrangeheritage.co.uk

