



LEXHAM MEWS

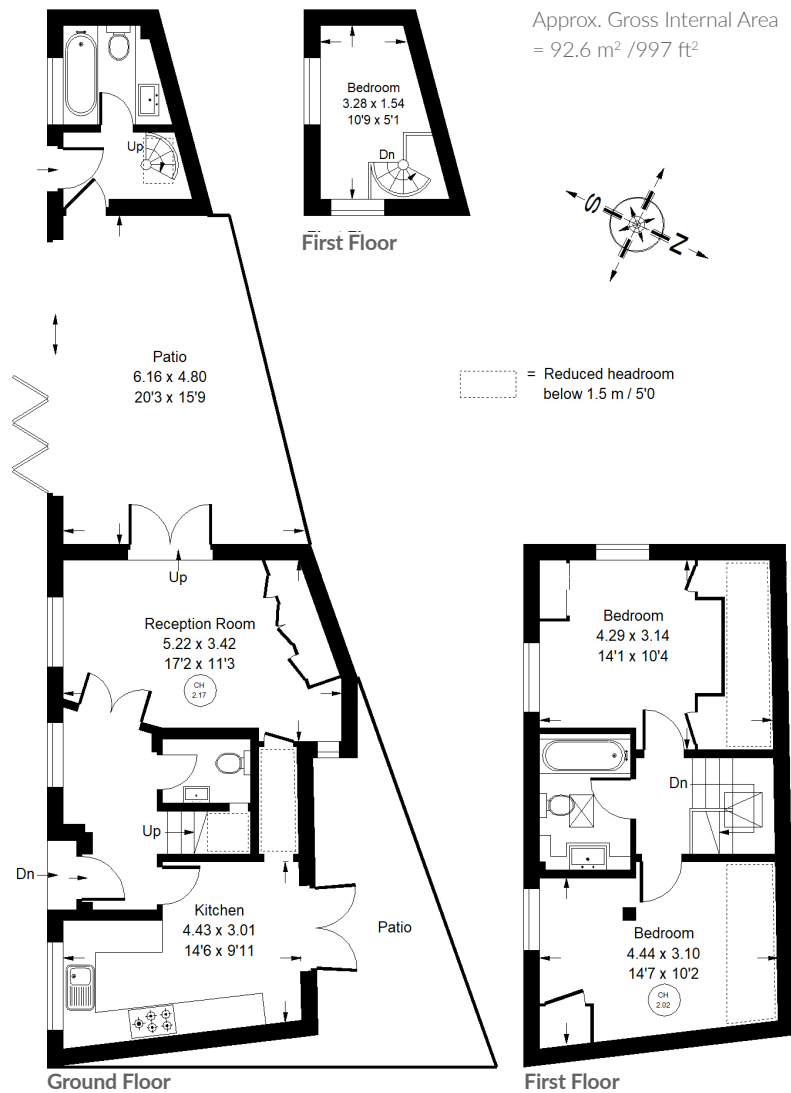


## Lexham Mews, W8

A unique opportunity to purchase a freehold mews house with off-street parking and separate annex in the heart of Stratford Road Village. The mews house is set in a 968 sq ft plot which includes off-street parking, courtyard garden and the annex which houses a bedroom/study and a bathroom. The main house is well presented and particularly bright, there is a spacious entrance hall with cloakroom/WC, eat-in kitchen and reception room to the ground floor. On the first floor there are two double bedrooms with storage and a family bathroom. Lexham Mews is a pretty cobbled mews situated off Stratford Road with its excellent local shops and restaurants and is within walking distance of Kensington High Street and the open spaces of Kensington Gardens and Holland Park.







## Lexham Mews, W8 - Freehold

Local Authority **Royal Borough of Kensington & Chelsea**

- Three bedrooms
- Two bathrooms
- Mews house
- Annex - One bedroom
- Off-street parking
- Courtyard garden
- EPC Rating: D
- Council Tax Band: H



Whilst every attempt has been made to ensure the accuracy of the floor plan, measurements are approximate and not to scale. No guarantee is given on the total square footage of the property quoted on the plan. Figures given are for guidance. Plan is for illustration purposes only, not to be used for valuations.