



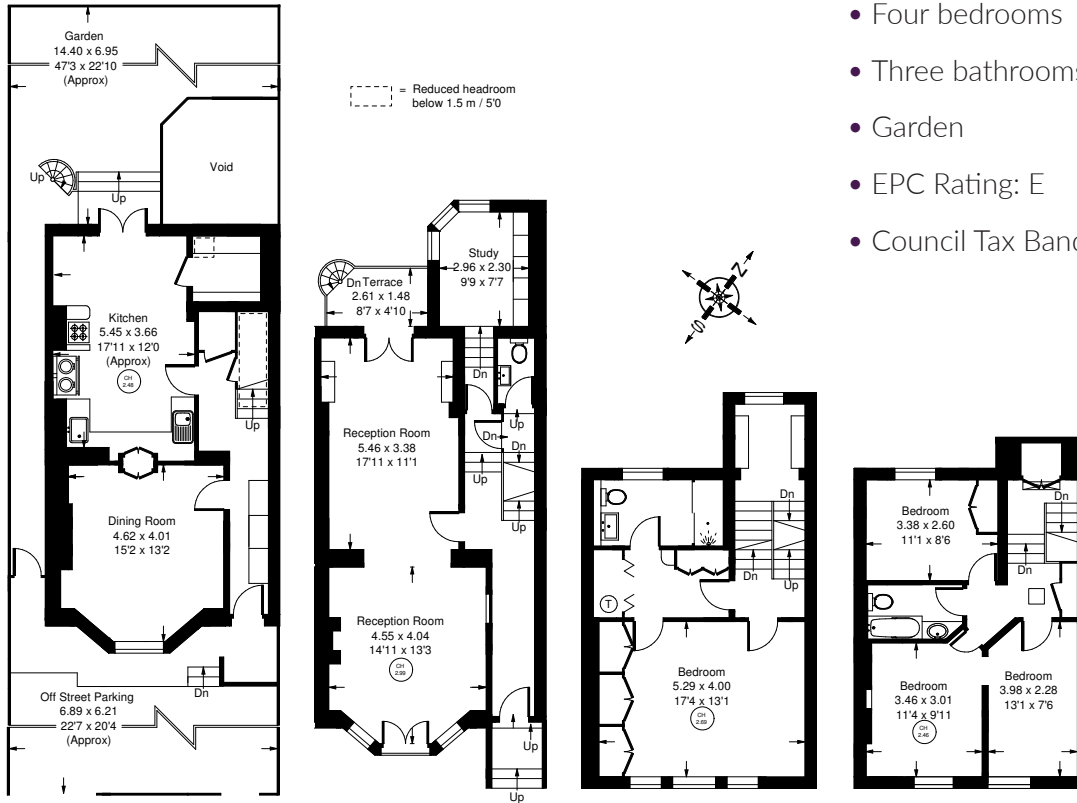
Mon - Fri
8:30 am - 6:30 pm
Disabled badge holders only
4 hours
At other times and Sat & Sun
Disabled badge holders only

SCARSDALE VILLAS

4 Scarsdale Villas, W8 - Freehold

Local Authority **Royal Borough of Kensington & Chelsea**

Approx. Gross Internal Area = 203 sq m / 2185 sq ft



- Four bedrooms
- Three bathrooms
- Garden
- EPC Rating: E
- Council Tax Band: H



A semi-detached family home with off-street parking in one of the most desirable streets in prime Kensington. This charming house has been in the same ownership for 38 years and boasts many original features, the accommodation is generous and could be reconfigured to suit personal requirements, it could also be possible to extend the house significantly, subject to all the necessary consents.

Scarsdale Villas is a well located and is a highly sought-after address, just to the south of Kensington High Street.



Whilst every attempt has been made to ensure the accuracy of the floor plan, measurements are approximate and not to scale. No guarantee is given on the total square footage of the property quoted on the plan. Figures given are for guidance. Plan is for illustration purposes only, not to be used for valuations.

LONDON OFFICES

North Kensington • Notting Hill • Kensington 020 7937 9976

COUNTRY OFFICE

Cotswolds 01285 707222

mountgrangeheritage.co.uk

hello@mountgrangeheritage.co.uk

