



Grosvenor Crescent Mews, SW1X



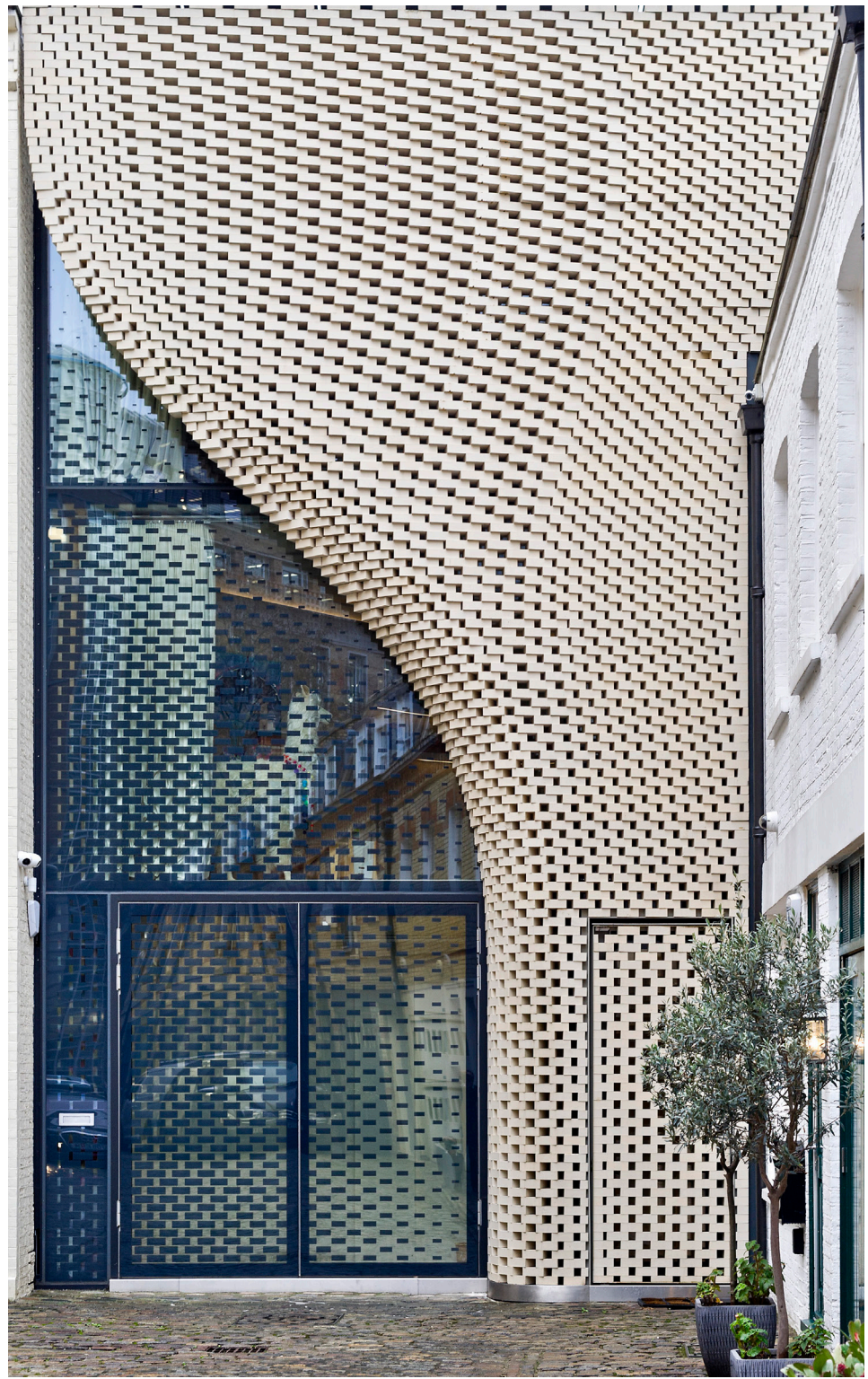
Grosvenor Crescent Mews, SW1X

An architectural masterpiece by Zaha Hadid Architects with a magnificent brick façade which provides a 'curtain' to the rest of the mews and diffused light into the home itself. The house is designed around a courtyard with a living wall and is united by a variety of sculptural elements giving a fluidity to the space throughout.

The house has air conditioning, underfloor heating and 24hr security. As well as offering the dramatic entertaining space there are four bedrooms (three en suite) and a separate office.

- Private Gated Mews
- South Facing Terrace
- Air Conditioning
- Laid over Four Floors
- Great Location
- EPC: D
- Council Tax Band: H

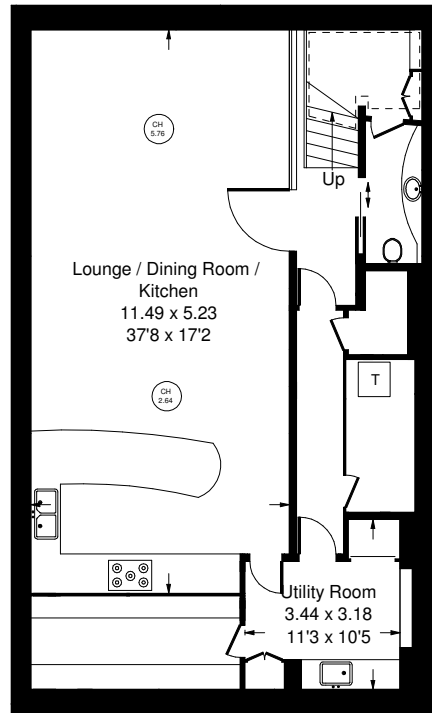




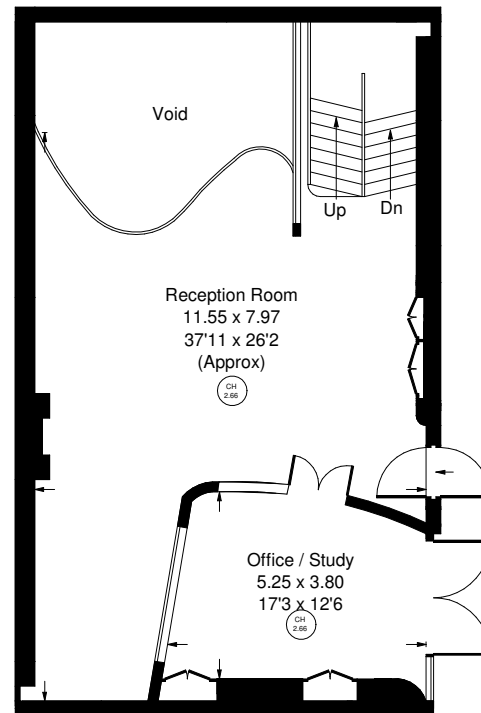


Grosvenor Crescent Mews, SW1X

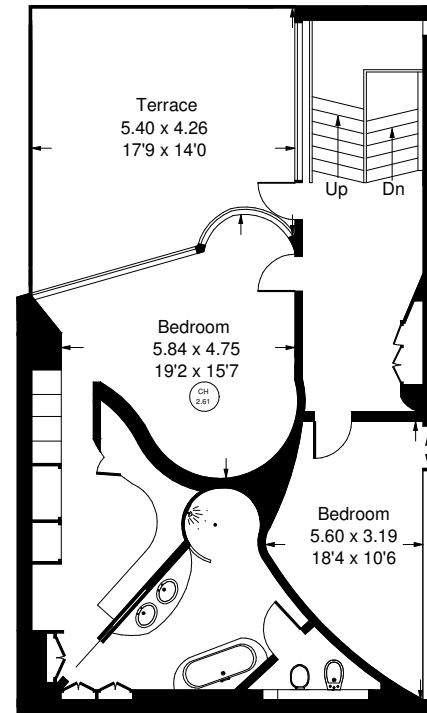
Local Authority **Royal Borough of Kensington & Chelsea**



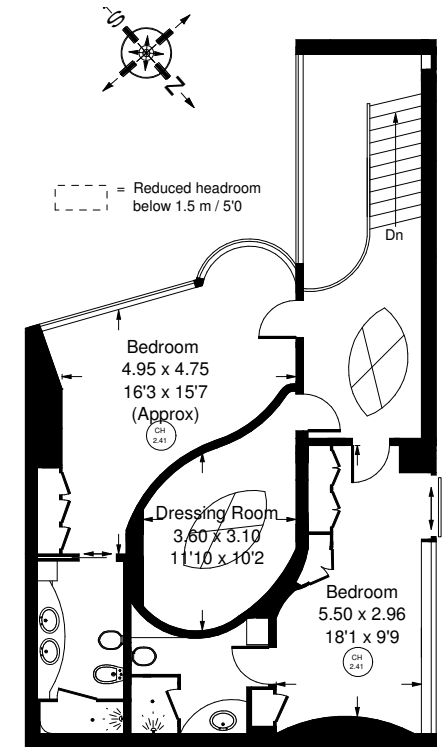
Lower Ground Floor



Ground Floor



First Floor



Second Floor



Whilst every attempt has been made to ensure the accuracy of the floor plan, measurements are approximate and not to scale. No guarantee is given on the total square footage of the property quoted on the plan. Figures given are for guidance. Plan is for illustration purposes only, not to be used for valuations.