

NAPIER PLACE







Napier Place, W14

A stunning south-facing mews house tucked away in a peaceful cul-de-sac. The home boasts three bedrooms, each with its own bathroom, two being en suites. Additionally, there is a utility room and a dedicated home office space on the first floor. Completely redesigned and crafted to an exceptional standard, it boasts solid oak flooring, a grand piano, and a private in-house gym. Enveloped with captivating artwork throughout and thoughtfully curated spaces for both relaxation and socialising, offering a seamless blend of sophistication and comfort.











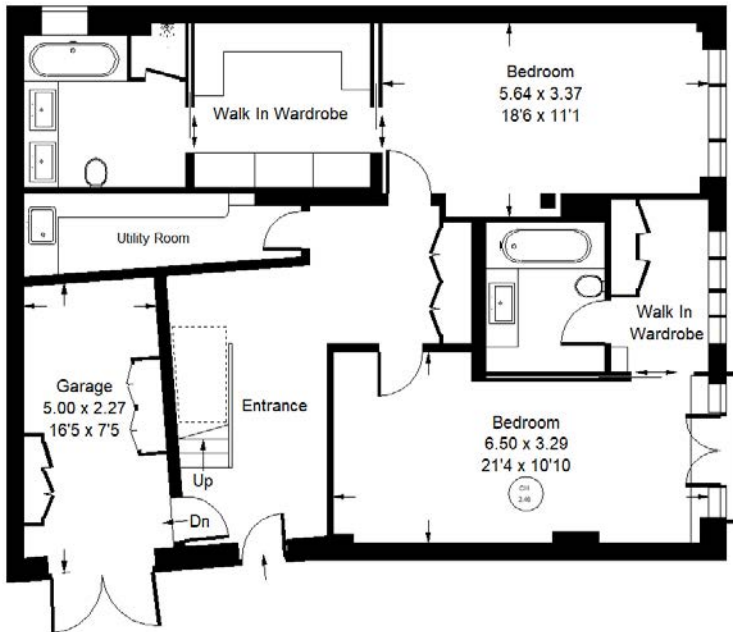




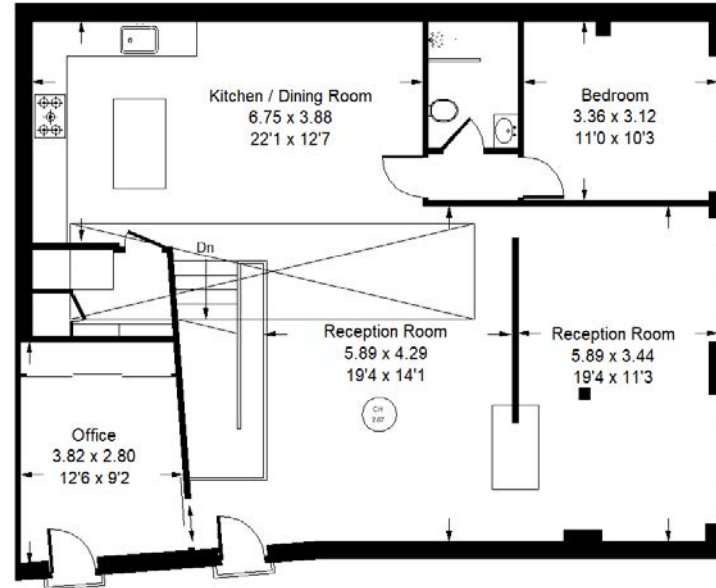
Napier Place, W14

Local Authority **Royal Borough of Kensington & Chelsea**

- South-facing
- Mews House
- Solid Oak Flooring
- Three Double Bedrooms
- Additional Study Room
- Three Bathrooms
- In-house Gym
- Utility Room




Ground Floor



First Floor

Approx. Gross Internal Area =
204.8 m² / 2204 ft²
Garage = 12 m² / 129 ft²
Total = 216.8 m² / 2333 ft²



 = Reduced headroom
below 1.5 m / 5'0



Whilst every attempt has been made to ensure the accuracy of the floor plan, measurements are approximate and not to scale. No guarantee is given on the total square footage of the property quoted on the plan. Figures given are for guidance. Plan is for illustration purposes only, not to be used for valuations.