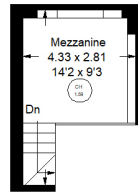
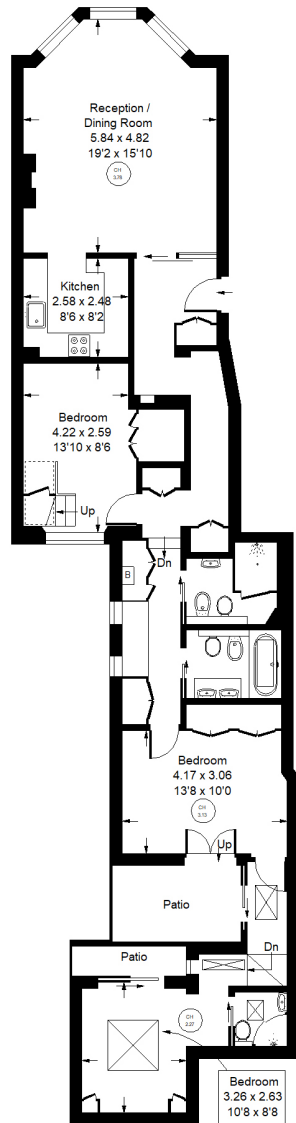




Cromwell Road, SW5





Mezzanine

--- = Reduced headroom  
below 1.5 m / 5'0

ft

Approx. Gross Internal Area  
= 107.4 m<sup>2</sup> / 1156 ft<sup>2</sup>  
Mezzanine= 9.1m<sup>2</sup> / 98 ft<sup>2</sup>  
Total= 116.5m<sup>2</sup> / 1254 ft<sup>2</sup>

Raised Ground Floor



## Cromwell Road, SW5 Share of Freehold

Local Authority **Royal Borough of Kensington & Chelsea**

- Three Bedrooms
- South Facing Garden
- Versatile Accommodation
- Beautifully Presented
- EPC: C
- Council Tax Band: G



Whilst every attempt has been made to ensure the accuracy of the floor plan, measurements are approximate and not to scale. No guarantee is given on the total square footage of the property quoted on the plan. Figures given are for guidance. Plan is for illustration purposes only, not to be used for valuations.