

PAN PENINSULA





Pan Peninsula Square, Canary Wharf, London E14

Stunning duplex apartment with roof terrace in this landmark development with panoramic views over Central London and the River Thames. Situated in the West Tower it offers two fabulous suites and superb entertaining space with three balconies in addition to the roof terrace. The flat itself benefits from a designated underground parking space. Pan Peninsula offers an array of communal facilities, including a cocktail lounge, concierge foyer, deluxe private cinema, business lounge, high-tech multi-floor gym, fitness studio and health spa. The concierge service is 24 hours a day seven days a week.







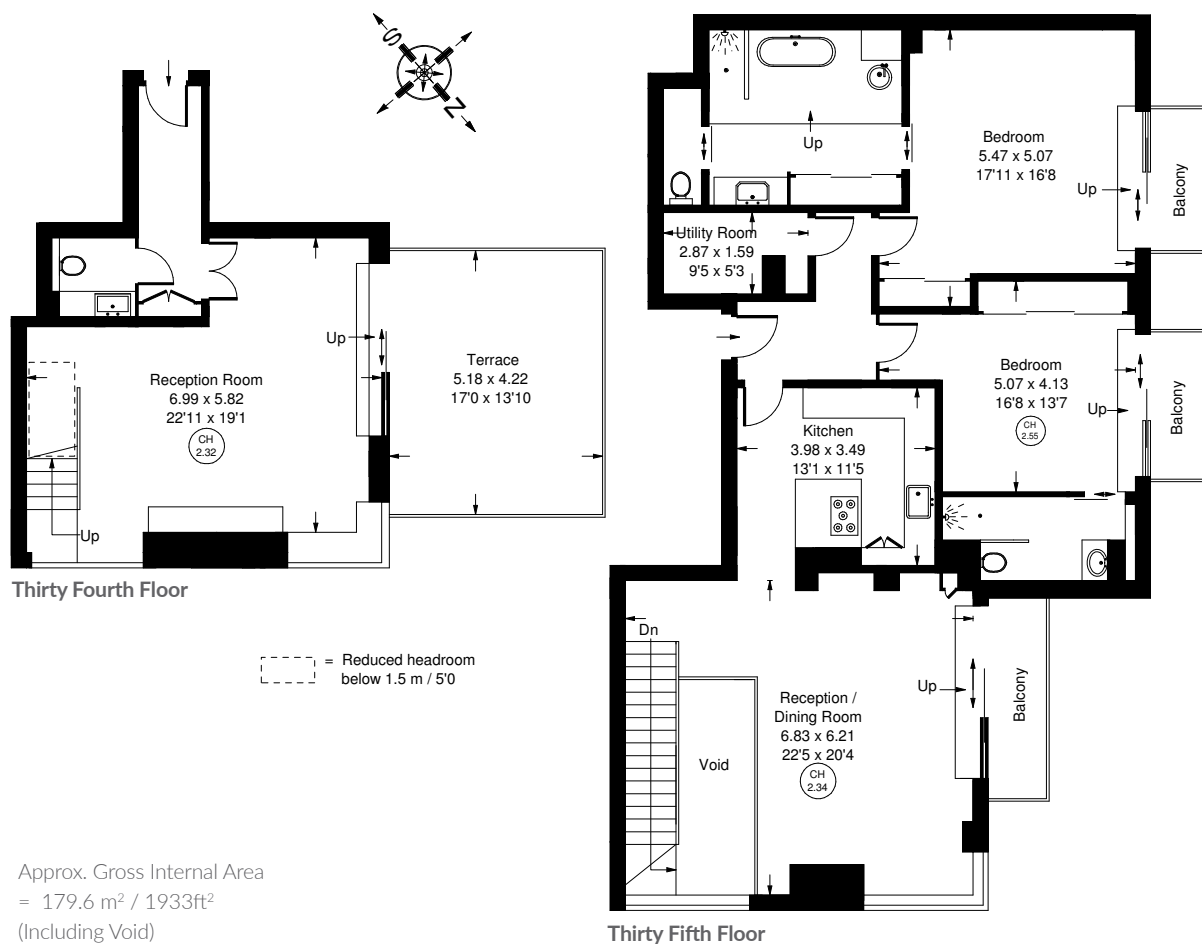












Pan Peninsula Square, Canary Wharf, London E14 - Leasehold

Local Authority **Tower Hamlets London Borough Council**

- Two Double Bedrooms
- Two Bathrooms
- Two Reception Rooms
- Three Balconies
- Roof Terrace
- Underground Parking Space
- 34th Floor – Duplex
- Lease 982 Years Unexpired
- EPC Rating: B



Whilst every attempt has been made to ensure the accuracy of the floor plan, measurements are approximate and not to scale. No guarantee is given on the total square footage of the property quoted on the plan. Figures given are for guidance. Plan is for illustration purposes only, not to be used for valuations.

LONDON OFFICES

Kensington • North Kensington • Notting Hill 020 7221 2277

COUNTRY OFFICE

Cotswolds 01285 707222

mountgrangeheritage.co.uk

hello@mountgrangeheritage.co.uk



MOUNTGRANGE
HERITAGE