

GRENFELL ROAD





Grenfell Road, W11

A lovely maisonette set within this Victorian artisan cottage close to Holland Park and Notting Hill. Arranged on the first and second floors with a large west-facing reception room, two double bedrooms, bathroom, and a kitchen/diner with balcony. Grenfell Road is located within easy reach of Holland Park, Portobello Road and the Westfield Shopping Centre with Latimer Road Underground for the Hammersmith, City and Circle Lines close by.

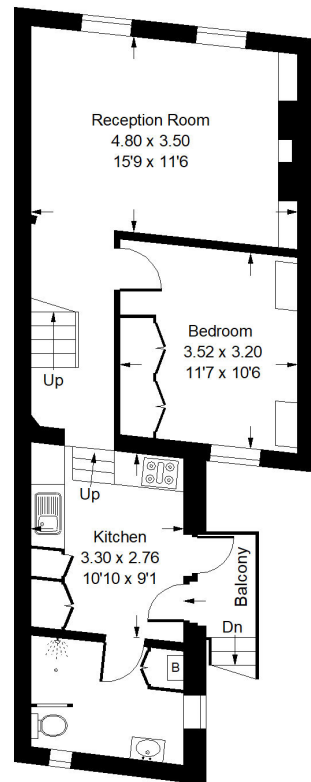






Grenfell Road, W11 - Share of Freehold

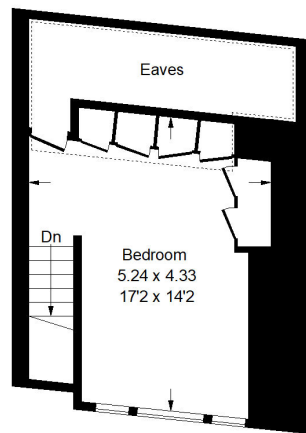
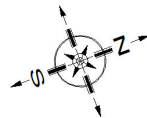
Local Authority - Royal Borough of Kensington & Chelsea



First Floor

Approx. Gross Internal Area = 71.6 sq m / 771sq ft
Eaves = 7 sq m / 75 sq ft
Total = 78.6 sq m / 846 sq ft

= Reduced headroom
below 1.5 m / 5'0



Second Floor



- Two bedrooms
- Reception room
- Balcony
- Period features
- First & second floor maisonette
- Council Tax Band: D
- Remaining Lease: 90 years



Whilst every attempt has been made to ensure the accuracy of the floor plan, measurements are approximate and not to scale. No guarantee is given on the total square footage of the property quoted on the plan. Figures given are for guidance. Plan is for illustration purposes only, not to be used for valuations.