

BERNERS STREET





## Berners Street, W1T

An exceptional three bedroom penthouse situated in the heart of Fitzrovia on Berners Street, opposite the Sanderson Hotel and just a short walk from Tottenham Court Road. Spanning nearly 2,000 sq ft with direct lift access, the apartment features a rare and generously sized roof terrace offering outstanding views across London and the West End. Each spacious bedroom offers fitted storage and its own en-suite bathroom. The property also benefits from full air-conditioning, a separate laundry room, and a guest cloakroom, while the principal suite enjoys its own walk-in wardrobe.





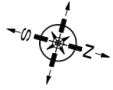




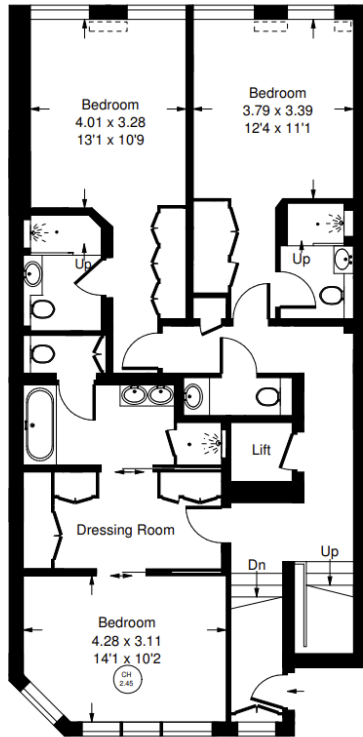




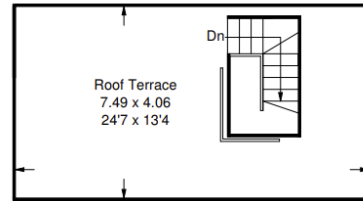
Approx. Gross Internal Area  
= 192.2 sq m / 2069 sq ft



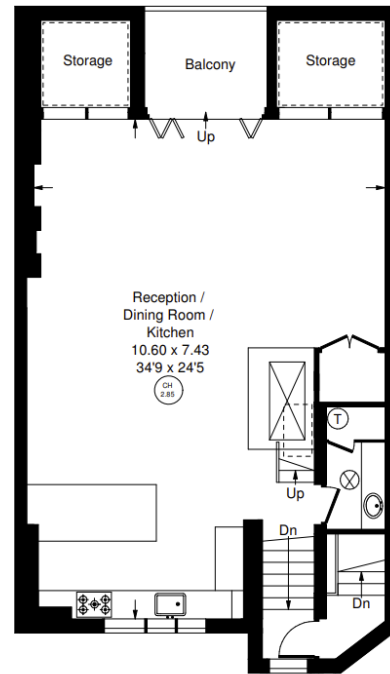
Reduced headroom  
below 1.5 m / 5'0"



Fifth Floor



Sixth Floor



Sixth Floor



## Berners Street, W1T

Local Authority - **City of Westminster**

- Three bedrooms
- Three en-suite bathrooms
- Walk in wardrobe
- Wooden floors throughout
- Air conditioning
- Underfloor heating in the bathrooms
- Roof terrace
- Direct lift access
- Laundry room
- Council Tax Band: H



Whilst every attempt has been made to ensure the accuracy of the floor plan, measurements are approximate and not to scale. No guarantee is given on the total square footage of the property quoted on the plan. Figures given are for guidance. Plan is for illustration purposes only, not to be used for valuations.