



DUNFORD BARN



Dunford Barn, Langford, GL7 - near Burford

Dunford Barn is a striking 17th-century Grade II listed property, crafted from classic Cotswold stone and set within the peaceful village of Langford, just a few miles from Burford. Beautifully restored to an exceptional standard, the home combines historic character with refined, contemporary interiors. Original period features have been thoughtfully preserved, including exposed beams, flagstone flooring, mullioned windows, and a traditional Cotswold stone fireplace with a new woodburning stove. These sit seamlessly alongside stylish modern finishes, creating a home of both charm and comfort. The generous accommodation includes four/five spacious bedrooms with the flexibility to sleep 11, (Super King, Twin or Triple setups) two sleek bathrooms, and an expansive living area. A separate snug, well-equipped kitchen-diner, utility room and downstairs WC offer versatility for modern living. Outside, the private walled garden enjoys a sunny south-westerly aspect and features a hot tub, large patio with multiple dining areas, BBQ space, and a lawn – ideal for relaxing or entertaining.













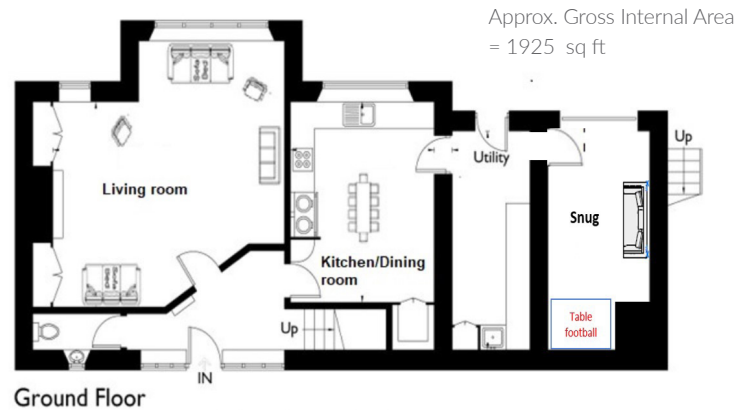






Dunford Barn, Langford, GL7 - near Burford - Freehold

Local Authority - **West Oxfordshire Council**



□ = Reduced headroom below 1.5m / 5'0"



- Four/five bedrooms
- Two bathrooms
- Vaulted sitting room with woodburning stove
- Snug (fifth bedroom) with French doors to garden
- Kitchen dining room
- Utility room
- Downstairs cloakroom
- South-west facing walled garden
- Patio with hot tub and BBQ area
- Grade II listed
- Council Tax Band: F
- Available for holiday lets (up to 11 people) as well as short/long lets



Whilst every attempt has been made to ensure the accuracy of the floor plan, measurements are approximate and not to scale. No guarantee is given on the total square footage of the property quoted on the plan. Figures given are for guidance. Plan is for illustration purposes only, not to be used for valuations.