

# KENSINGTON PARK MEWS







## Kensington Park Mews, W11

A fabulous lateral period house located in a private gated mews in the heart of Notting Hill. The house is arranged over three floors with a first floor reception room with wooden flooring and a south-facing terrace. The principal bedroom with en suite bathroom is on the top floor with a full width balcony, there are two further bedrooms and bathroom on the ground floor. Parking is available in the mews as well as entitlement to an RBKC parking payment. Kensington Park Mews is located close to Portobello Road, Westbourne Grove and the fabulous array of shops and restaurants including Osteria Basilico.













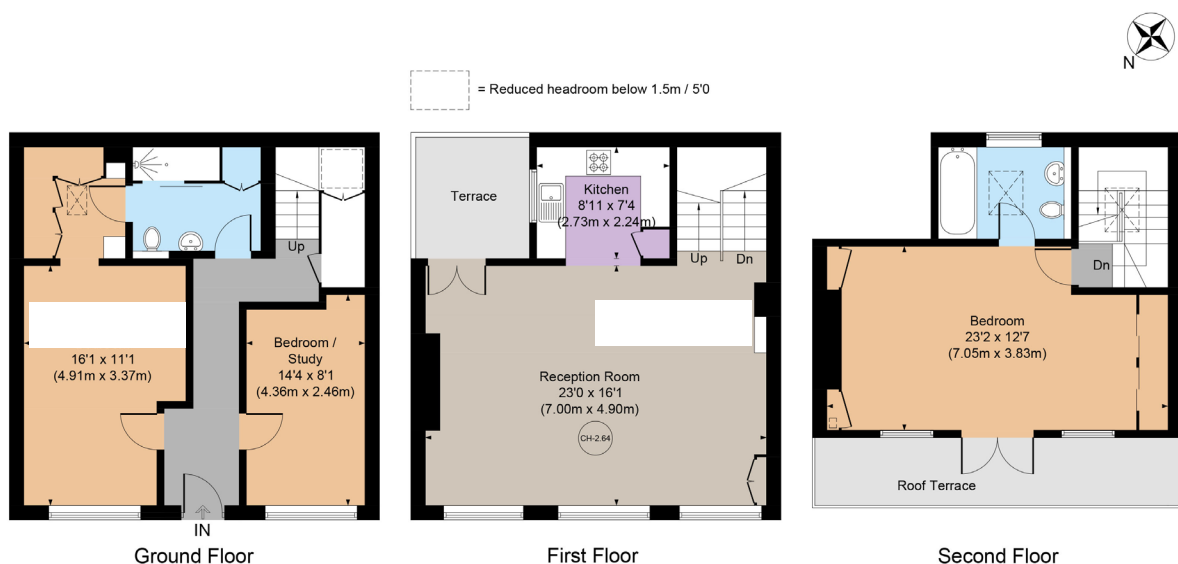
# Kensington Park Mews, W11 - Freehold

Local Authority - **Royal Borough of Kensington & Chelsea**

- Three bedrooms
- Two bathrooms
- Lateral reception room
- South-facing terrace
- Private gated mews
- Off-street parking
- EPC Rating: D
- Council Tax Band: G



Approx. Gross Internal Area = 1455 sq m / 135.2 sq ft



Whilst every attempt has been made to ensure the accuracy of the floor plan, measurements are approximate and not to scale. No guarantee is given on the total square footage of the property quoted on the plan. Figures given are for guidance. Plan is for illustration purposes only, not to be used for valuations.