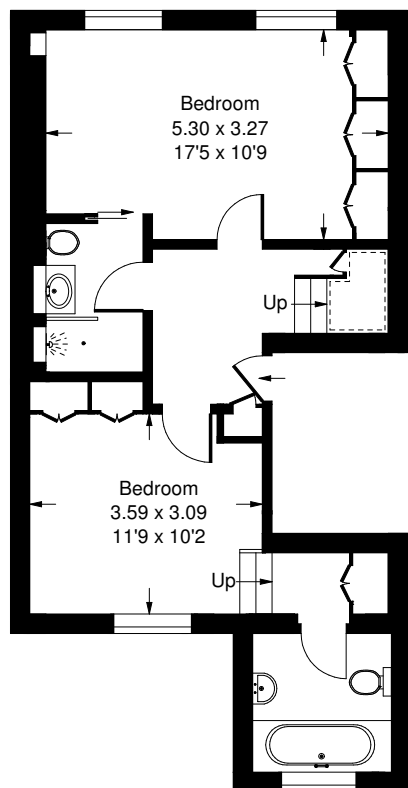


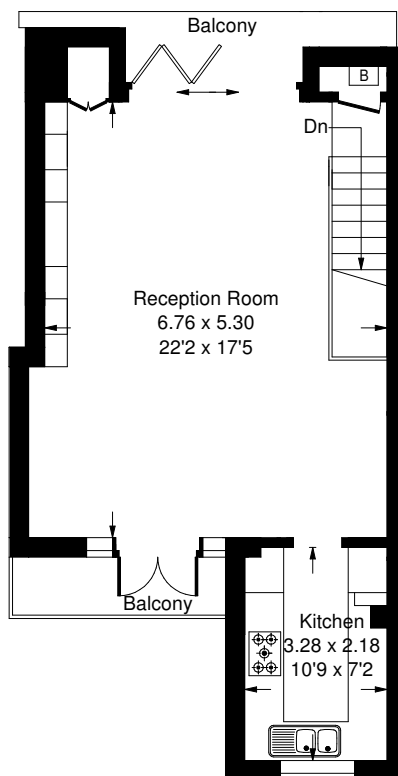


Lancaster Road, W11

Approx. Gross Internal Area
94.7 sq m / 1019 sq ft



Second Floor



Third Floor



Lancaster Road, W11 Leasehold

Local Authority **Royal Borough of Kensington & Chelsea**

- Two Bedrooms
- Two Bathrooms
- Two Balconies
- Duplex Apartment
- Period Conversion
- EPC Rating: D
- Council Tax Band: G
- Service Charge £1161.56 per annum
- Ground Rent £10 per annum
- Remaining Lease 89 Years



Whilst every attempt has been made to ensure the accuracy of the floor plan, measurements are approximate and not to scale. No guarantee is given on the total square footage of the property quoted on the plan. Figures given are for guidance. Plan is for illustration purposes only, not to be used for valuations.

LONDON OFFICES

Notting Hill • Kensington • North Kensington 020 8960 0181

COUNTRY OFFICE

Cirencester 01285 707222

mountgrangeheritage.co.uk

hello@mountgrangeheritage.co.uk

