

# COLVILLE TERRACE







## Colville Terrace, W11

An stylishly presented garden flat located on a popular pastel fronted terrace in the heart of Notting Hill. This spacious apartment has a large reception room with an open-plan kitchen with dining area and wooden floors. There are two double bedrooms and a stylish bathroom with marble, herringbone tiling. The principal bedroom has a en-suite shower room and overlooks the garden to the rear and the second bedroom overlooks the internal patio garden. The flat also benefits from a large storage area by the front door for bicycles, etc. Located moments from Portobello Road and within walking distance of Notting Hill Gate Underground Station (District, Circle & Central lines).





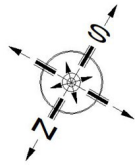




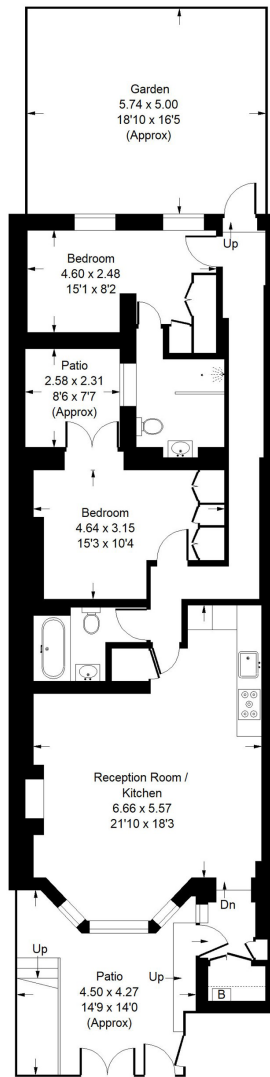




Approx. Gross Internal Area  
= 117.7 sq m / 1267 sq ft



□ = Reduced headroom  
below 1.5 m / 5'0"



Lower Ground Floor



Whilst every attempt has been made to ensure the accuracy of the floor plan, measurements are approximate and not to scale. No guarantee is given on the total square footage of the property quoted on the plan. Figures given are for guidance. Plan is for illustration purposes only, not to be used for valuations.



## Colville Terrace, W11 - Leasehold

Local Authority - **Royal Borough of Kensington & Chelsea**

- Two double bedrooms
- Two bathrooms (one en-suite)
- Reception room
- South-facing decked garden
- Council Tax Band: F