

CHRISTCHURCH STREET





Christchurch Street, SW3

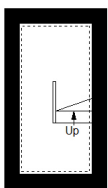
Delightful mid-19th century house with three bedrooms on this quiet and pretty street in Chelsea which has been renovated with impeccable style and to a super standard throughout. Beautifully furnished this turnkey home offers all the creature comforts and also benefits from a patio garden and a terrace. The extraordinary Chelsea Physic Garden is on the doorstep, the river is moments' away and the Kings Road is less than a ten minute walk.

- Three Bedrooms
- Terrace House
- Excellent Condition
- Private Terrace and Garden
- Great Location
- Two Bathrooms
- Council Tax Band: H

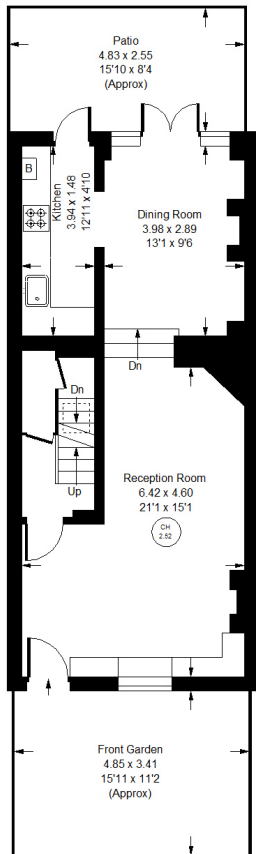




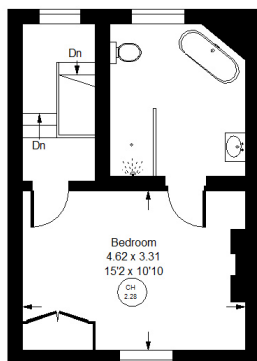




Lower Ground Floor

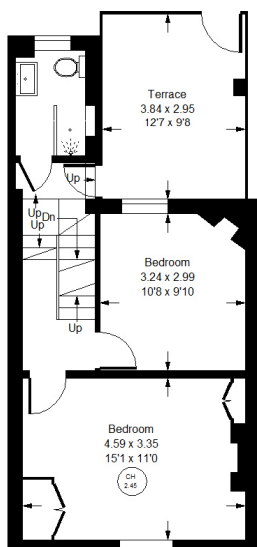


Ground Floor

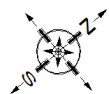


Second Floor

Reduced headroom
below 1.5 m / 5'0



First Floor



Approx. Gross Internal Area
= 123.1 m² / 1325 ft²



Christchurch Street, SW3

Local Authority **Royal Borough of Kensington & Chelsea**



Whilst every attempt has been made to ensure the accuracy of the floor plan, measurements are approximate and not to scale. No guarantee is given on the total square footage of the property quoted on the plan. Figures given are for guidance. Plan is for illustration purposes only, not to be used for valuations.

LONDON OFFICES

Kensington • North Kensington • Notting Hill 020 7221 2277

COUNTRY OFFICE

Cotswolds 01285 707222

mountgrangeheritage.co.uk

hello@mountgrangeheritage.co.uk



MOUNTGRANGE
HERITAGE