







## Dunworth Mews, W11

Set within this cobbled mews is this special Freehold house, arranged on three floors. The ground floor provides a large double bedroom suite with excellent storage, the first floor is dedicated to living space with a reception room and open-plan kitchen, with solid French oak flooring. The principal bedroom suite occupies the top floor along with en-suite bathroom. Dunworth Mews is a no-through road and runs off the world-famous Portobello Road, ideally situated for all the shops, restaurants and transport facilities of Notting Hill and Westbourne Grove.



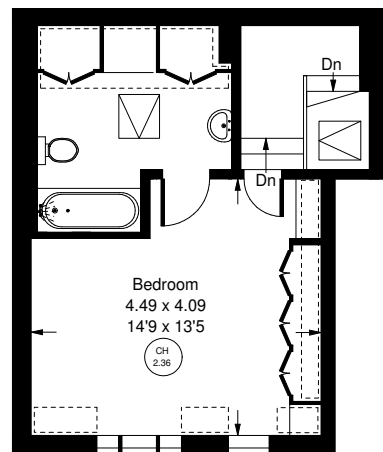




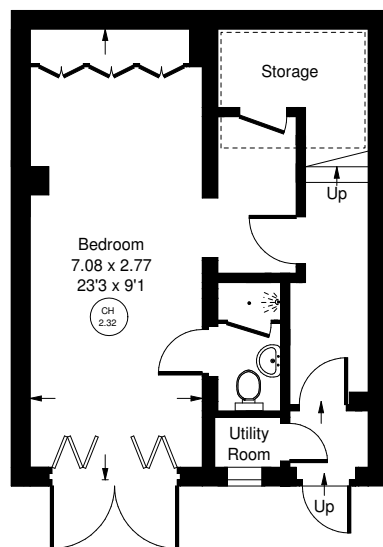




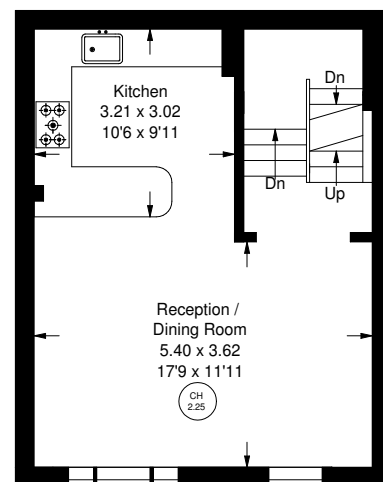
Approx. Gross Internal Area  
= 108.2 sq m / 1165 sq ft



Second Floor



Ground Floor



First Floor



## Dunworth Mews, W11 - Freehold

Local Authority **Royal Borough of Kensington & Chelsea**

- Two bedrooms
- Two bathrooms
- Reception room
- Open-plan kitchen
- Cobbled mews
- EPC Rating: C
- Council Tax Band: F



Whilst every attempt has been made to ensure the accuracy of the floor plan, measurements are approximate and not to scale. No guarantee is given on the total square footage of the property quoted on the plan. Figures given are for guidance. Plan is for illustration purposes only, not to be used for valuations.