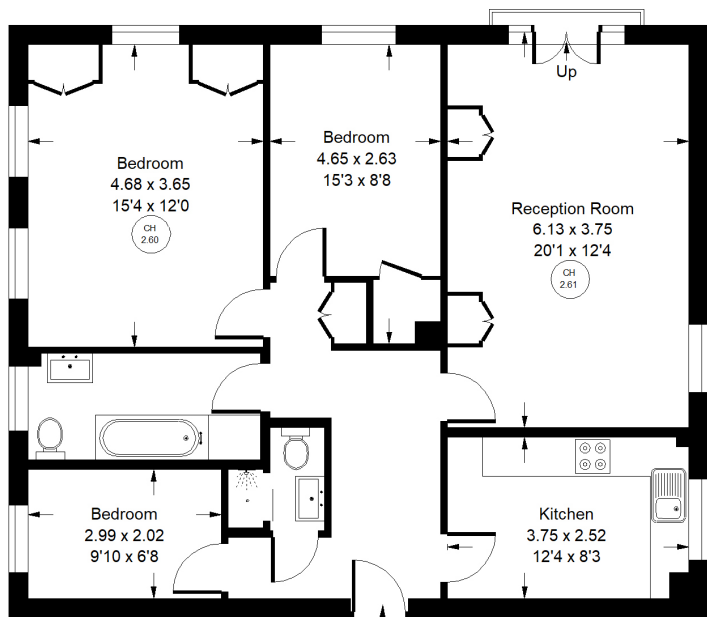




CAROLINE HOUSE



Third Floor

Approx. Gross Internal Area  
= 88.7 sq m / 955 sq ft



## Bayswater Road, W2 - Leasehold

Local Authority **City of Westminster**

- Three bedrooms
- Two bathrooms
- Lift and Porter
- Opposite Hyde Park
- EPC Rating: C
- Council Tax Band: F

A great third floor apartment (with lift) quietly positioned at the rear of this highly regarded portered building located opposite Hyde Park. The flat offers well balanced lateral accommodation which includes a spacious entrance hallway, three bedrooms, two bathrooms, a charming reception room with dual aspect windows providing leafy views and a separate fitted kitchen. Caroline House is a well run building where properties seldom come to the market. Located right opposite the gates to Hyde Park in this ever improving area. The property enjoys an outstanding array of amenities on the doorstep.



Whilst every attempt has been made to ensure the accuracy of the floor plan, measurements are approximate and not to scale. No guarantee is given on the total square footage of the property quoted on the plan. Figures given are for guidance. Plan is for illustration purposes only, not to be used for valuations.