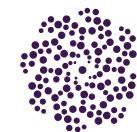


Ladbroke Gardens, W11



**MOUNTGRANGE**  
HERITAGE

## Ladbroke Gardens, W11 Share of Freehold

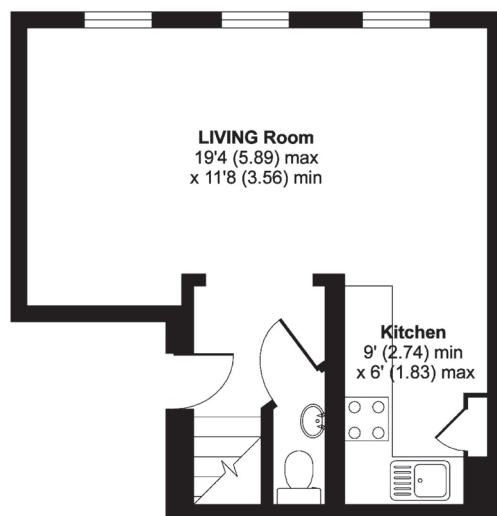
Service Charge **Approximately £2,500 per annum**

Ground Rent **None**

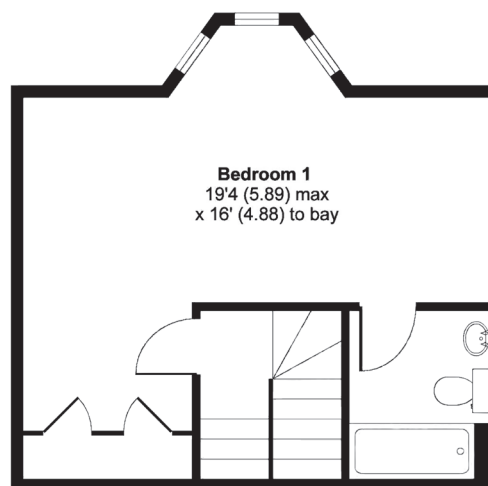
Lease Length **Approximately 95 Years Remaining**

Local Authority **Royal Borough of Kensington & Chelsea**

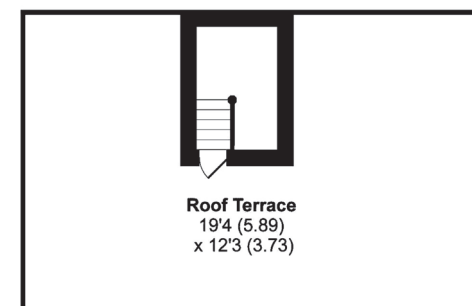
- Duplex Apartment
- Extensively Refurbished
- Bright Reception Room
- Large Roof Terrace
- Master Bedroom With En Suite
- EPC = C



THIRD FLOOR



FOURTH FLOOR



ROOF TERRACE

Approx. Gross Internal Floor Area  
687 sq ft / 63.8 sq m



We have prepared these property particulars as a general guide to a broad description of the property. They are not intended to constitute part of an offer or contract. We have not carried out a structural survey and the services, appliances and specific fittings have not been tested. All photographs, measurements, floorplans and distances referred to are given as a guide only and should not be relied upon for the purchase of floor coverings or any other fixtures or fittings. Lease details, service charges and ground rent (where applicable) are given as a guide only and should be checked and confirmed by your Solicitor prior to exchange of contracts.