



LONSDALE ROAD



## Lonsdale Road, W11

A beautiful wisteria complements the pastel façade of this stunning period house with garden in the heart of Notting Hill. This lovely home is arranged with a large reception room and study on the raised ground floor while the spacious kitchen dining room is on the lower ground floor with access to the private garden. There are four bedrooms, two bathrooms (one en suite) and a rare roof terrace with far-reaching views across London. Lonsdale Road is an iconic street off Ledbury Road with Westbourne Grove on the doorstep and Portobello Road just moments away. The Central Line underground station on Notting Hill Gate is only a short walk.

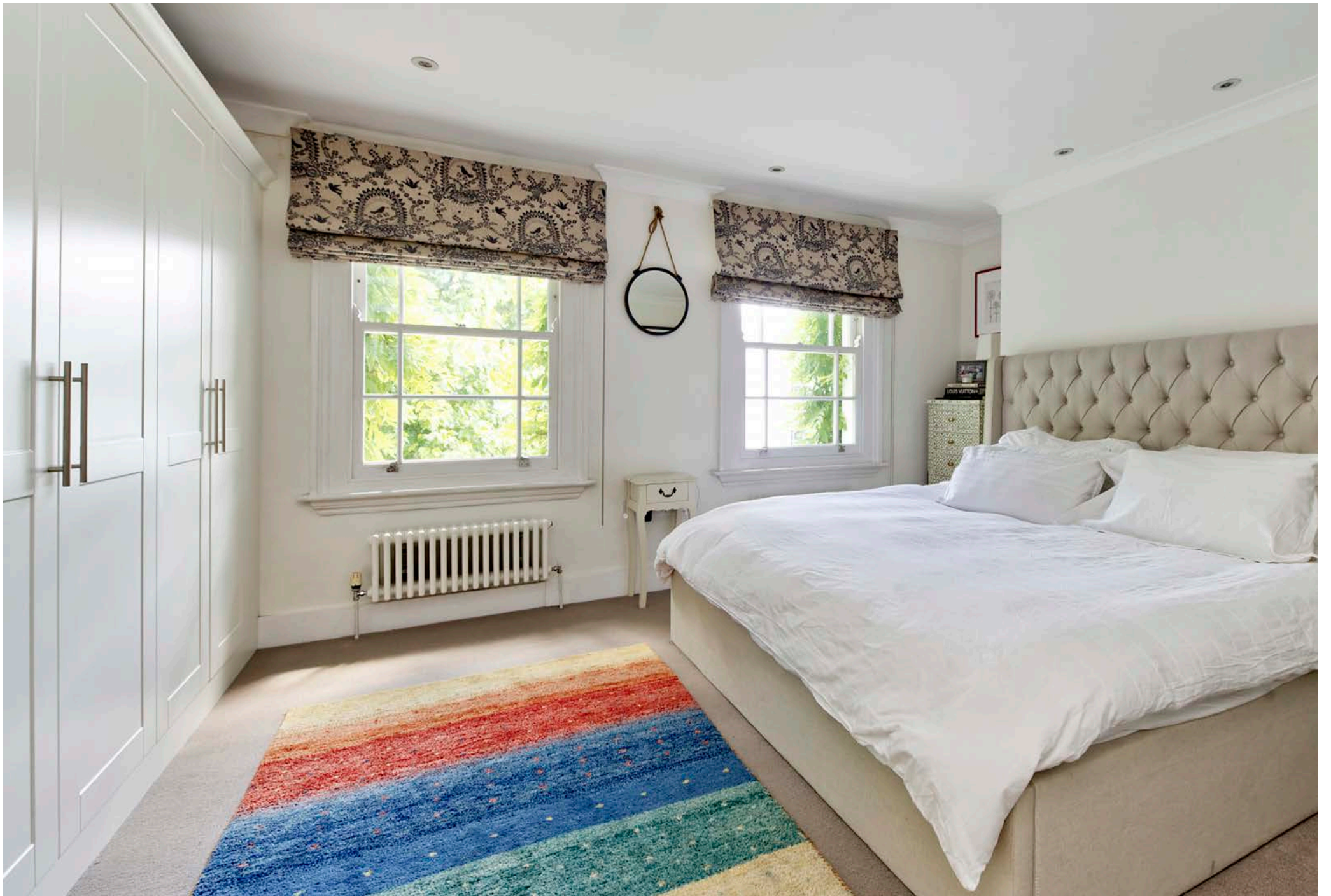














# Lonsdale Road, W11 - Freehold

Local Authority: Royal Borough of Kensington & Chelsea



Approx. Gross Internal Area = 164.7 m<sup>2</sup> / 1773 ft<sup>2</sup>  
(Excluding External Cupboard)

- Four Bedrooms
- Two Bathrooms
- Drawing Room
- Kitchen Dining Room
- Utility/Cloakroom
- Garden
- Roof Terrace
- Council Tax Band:
- EPC Rating:



Whilst every attempt has been made to ensure the accuracy of the floor plan, measurements are approximate and not to scale. No guarantee is given on the total square footage of the property quoted on the plan. Figures given are for guidance. Plan is for illustration purposes only, not to be used for valuations.

LONDON OFFICES

Kensington • North Kensington • Notting Hill 020 7221 2277

COUNTRY OFFICE

Cotswolds 01285 707222

[mountgrangeheritage.co.uk](http://mountgrangeheritage.co.uk)

[hello@mountgrangeheritage.co.uk](mailto:hello@mountgrangeheritage.co.uk)



**MOUNTGRANGE**  
HERITAGE