

BATTEL MEWS





Battel Mews, Cirencester, GL7

Delightful mews house extending to 831 square feet offering well-balanced accommodation with two double bedrooms and two bathrooms. The ground floor provides a lovely reception room with fireplace and doors through to a large kitchen dining room. Located in a private mews with off-street parking this really is an ideal purchase for a first time buyer or as a second home in the heart of the Cotswolds.

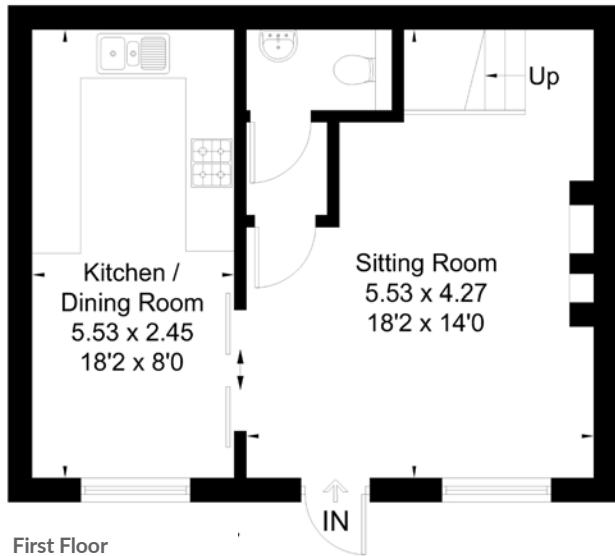




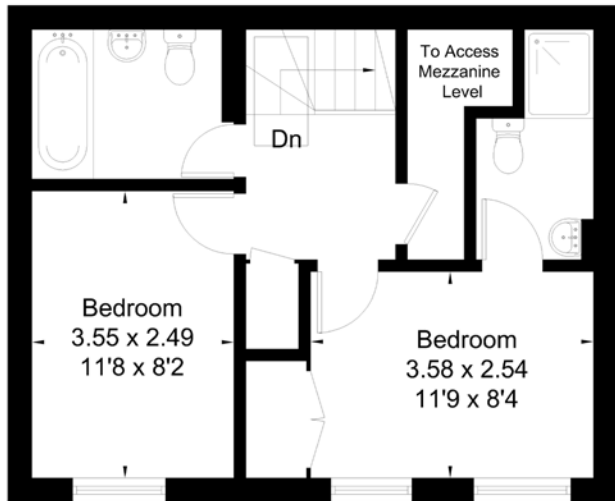


Cirencester, known as the 'Capital of the Cotswolds', enjoys a strategic location with easy access to major highways like the M4, M5, and M40/A40, as well as a mainline train station at Kemble, and extensive bus and coach networks.





Approx. Gross Internal Area
77.2 ft² / 831 m²



Battel Mews, Cirencester, GL7

Local Authority **Cotswold District**

- Two Bedrooms
- Two Bathrooms
- Kitchen/Dining Room
- Sitting Room
- Private Mews
- Off-street Parking
- EPC:
- Council Tax Band:



Whilst every attempt has been made to ensure the accuracy of the floor plan, measurements are approximate and not to scale. No guarantee is given on the total square footage of the property quoted on the plan. Figures given are for guidance. Plan is for illustration purposes only, not to be used for valuations.