

# BATTEL MEWS





## Battel Mews, Cirencester, GL7

Impressive double-fronted mews house extending to 831 square feet with three bedrooms and excellent entertaining space. The house would be perfect for a young family or make a great second home in the heart of the Cotswolds. The ground floor offers a lovely reception room with character fireplace and doors to a large kitchen dining room. This private gated mews in the centre of Cirencester with off-street parking is a real gem.

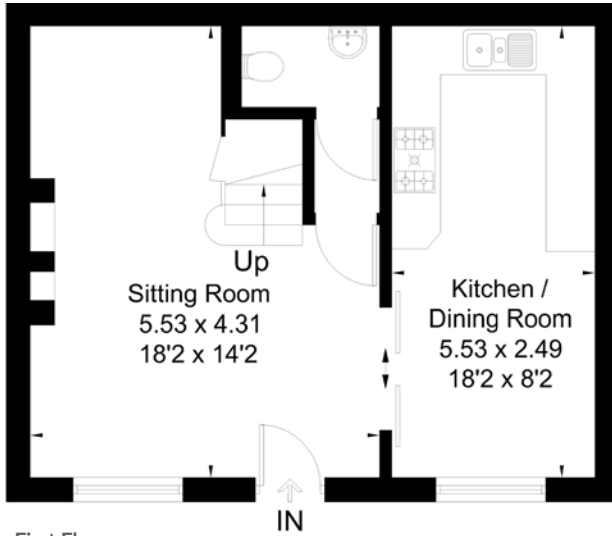






Cirencester, known as the 'Capital of the Cotswolds', enjoys a strategic location with easy access to major highways like the M4, M5, and M40/A40, as well as a mainline train station at Kemble, and extensive bus and coach networks.

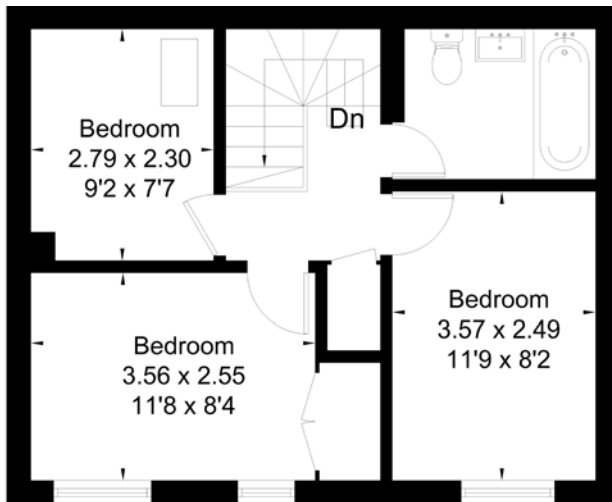




First Floor



Approx. Gross Internal Area  
77.2 ft<sup>2</sup> / 831 m<sup>2</sup>



Ground Floor



## Battel Mews, Cirencester, GL7

Local Authority **Cotswold District**

- Three Bedrooms
- One Bathroom
- Kitchen/Dining Room
- Sitting Room
- Private Mews
- Off-street Parking
- EPC:
- Council Tax Band:



Whilst every attempt has been made to ensure the accuracy of the floor plan, measurements are approximate and not to scale. No guarantee is given on the total square footage of the property quoted on the plan. Figures given are for guidance. Plan is for illustration purposes only, not to be used for valuations.

LONDON OFFICES

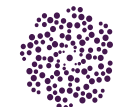
Kensington • North Kensington • Notting Hill 020 7221 2277

COUNTRY OFFICE

Cotswolds 01285 707222

[mountgrangeheritage.co.uk](http://mountgrangeheritage.co.uk)

[hello@mountgrangeheritage.co.uk](mailto:hello@mountgrangeheritage.co.uk)



**MOUNTGRANGE**  
HERITAGE