



LAUREL COTTAGE



## Laurel Cottage, Cirencester, GL7

This enchanting cottage in the picturesque village of Daglingworth and has been meticulously restored to retain its original character whilst providing all the comforts of modern living. Set on a quiet lane with no through road, leading to the beautiful Bathurst estate. The wonderful landscaped garden and patio are perfect for outside entertaining and the double garage is an added bonus. Flooded with light the cottage is airy and inviting on every level. This beautiful home is the archetypal Cotswold escape.















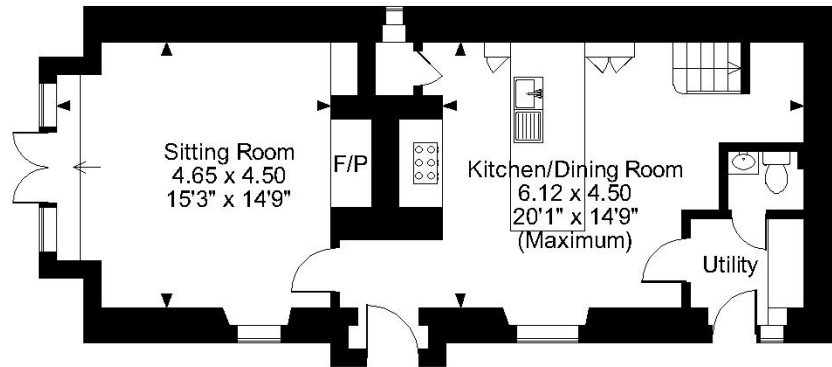




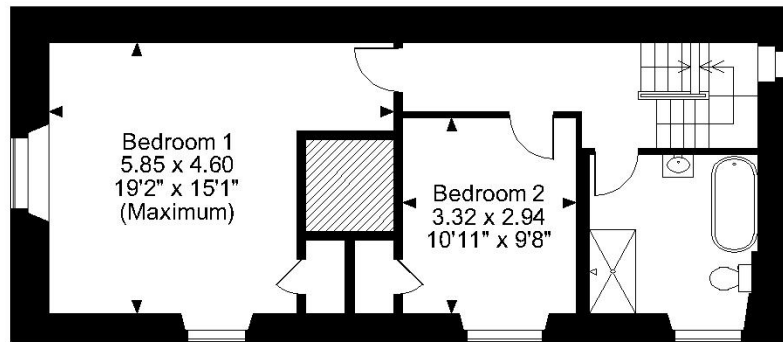




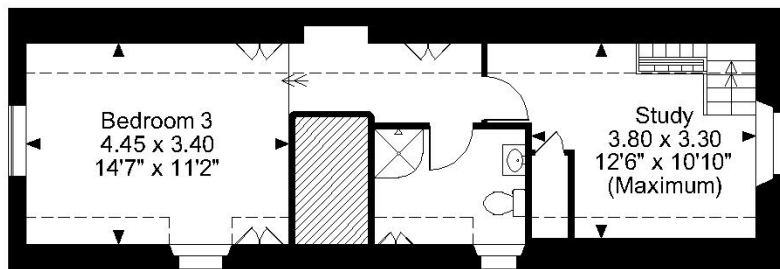
# Laurel Cottage, Cirencester, GL7



Ground Floor

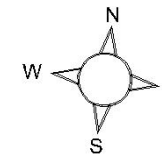
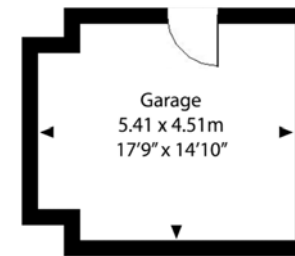


First Floor



Second Floor

- Kitchen Dining Room
- Sitting Room
- Three Bedrooms
- Fourth Bedroom/Office
- Two Bathrooms
- Garden and Patio
- Double Garage
- Council Tax Band: F
- EPC: D



Approx. Gross Internal Area  
= 146 m<sup>2</sup> / 1567 ft<sup>2</sup>



Whilst every attempt has been made to ensure the accuracy of the floor plan, measurements are approximate and not to scale. No guarantee is given on the total square footage of the property quoted on the plan. Figures given are for guidance. Plan is for illustration purposes only, not to be used for valuations.