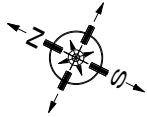
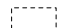
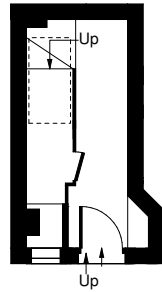


Portland Road, W11

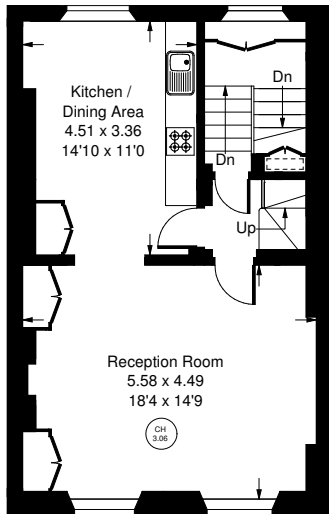
Approx. Gross Internal Area
= 111.1 m² / 1196 ft²



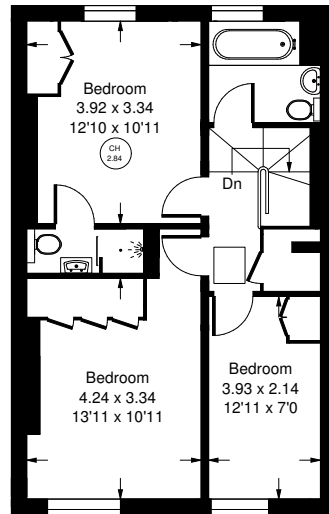
 = Reduced headroom
below 1.5 m / 5'0"



Raised Ground Floor



First Floor



Second Floor



Portland Road, W11 Leasehold

Local Authority **Royal Borough of Kensington & Chelsea**

- Upper Maisonette
- Three Bedrooms
- Two Bathrooms
- Private Entrance
- Great Location
- EPC: C
- Council Tax Band: F



Whilst every attempt has been made to ensure the accuracy of the floor plan, measurements are approximate and not to scale. No guarantee is given on the total square footage of the property quoted on the plan. Figures given are for guidance. Plan is for illustration purposes only, not to be used for valuations.