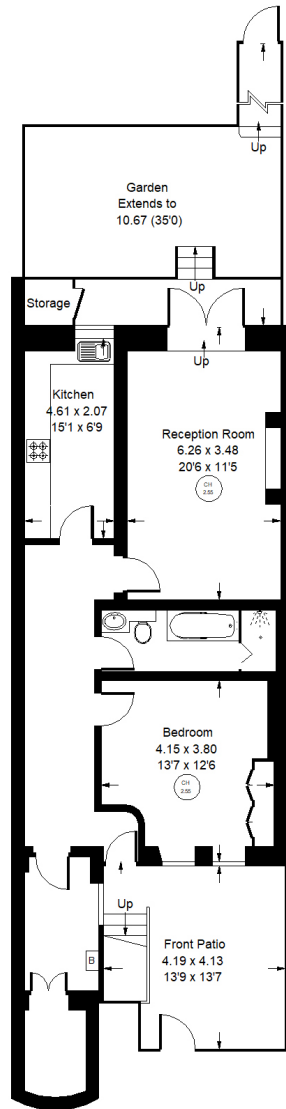




Elgin Crescent, W11



Approx. Gross Internal Area = 76.6 m<sup>2</sup> / 824 ft<sup>2</sup>  
 Storage = 1.1 m<sup>2</sup> / 12 ft<sup>2</sup>x.  
 Total = 77.7 m<sup>2</sup> / 836 ft<sup>2</sup>

Lower Ground Floor



## Elgin Crescent, W11 Leasehold

Local Authority **Royal Borough of Kensington & Chelsea**

- One Bedroom
- Long Leasehold
- Ample Storage
- Private Patio
- Communal Gardens
- EPC Rating: C
- Council Tax Band: E
- Service Charge: XXX
- Remaining Lease: 169



Whilst every attempt has been made to ensure the accuracy of the floor plan, measurements are approximate and not to scale. No guarantee is given on the total square footage of the property quoted on the plan. Figures given are for guidance. Plan is for illustration purposes only, not to be used for valuations.