

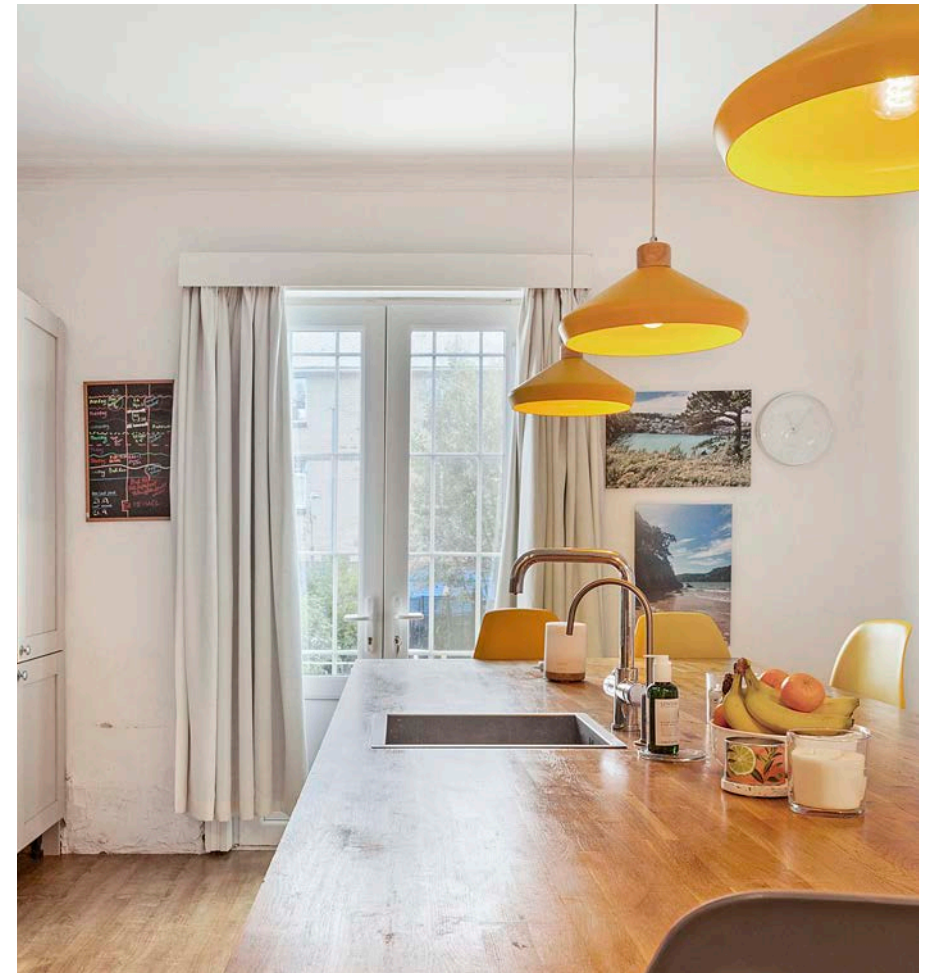


ROYAL PARADE



ROYAL PARADE





Royal Parade, Cheltenham, GL5

Nestled on the esteemed Royal Parade in the heart of Cheltenham this wonderful house built in 1834 is an example of Regency architecture at its finest. Set back on a private road with a lovely garden the property has beautiful period features with decorative cornices and high ceilings. The house offers an opportunity for refurbishment with scope to extend the main house (subject to planning) to create an additional annexe. Bayshell Road is well located for Cheltenham Ladies College and Malmaison.







Royal Parade, Cheltenham, GL5 - Freehold

Local Authority Cheltenham Borough Council



First Floor



Second Floor



- Six Bedrooms
- Four Bathrooms
- Sitting Room
- Dining Room
- Lounge
- Garden
- Council Tax Band: G
- EPC:



Whilst every attempt has been made to ensure the accuracy of the floor plan, measurements are approximate and not to scale. No guarantee is made as to the total square footage of the property quoted on the plan. Figures given are for guidance. Plan is for illustration purposes only, not to be used for legal purposes.



Ground Floor



Lower Ground Floor