

HURST LODGE





Hurst Lodge, RG10

Grade II listed home dating back to circa 1580 set in around 49 acres. Hurst is a highly desirable village just 2 miles from Twyford where there is a railway station with direct line to London. The M3 and M4 are a short drive away, the property offers extraordinary living and entertaining space and is furnished with tremendous flair.

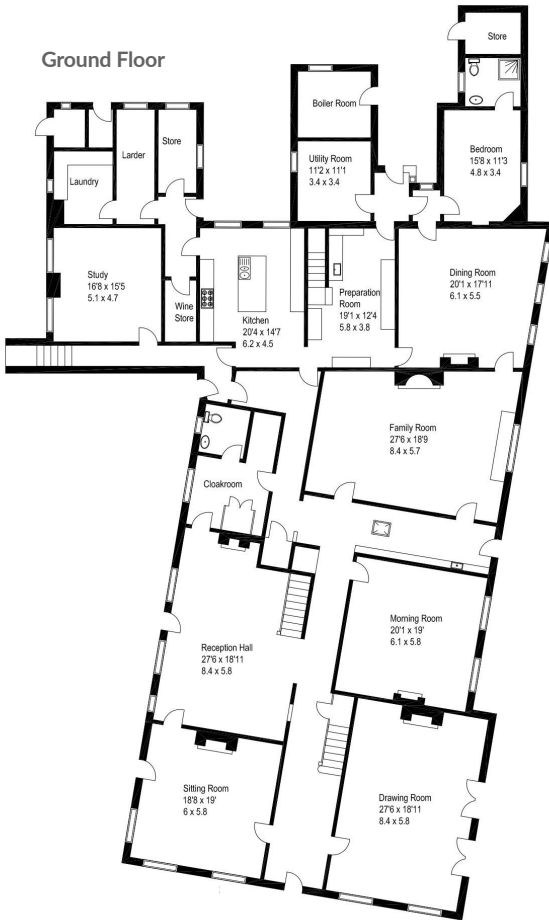
- Eleven Bedrooms
- Grade II listed
- Gated Driveway
- Maintained Grounds
- Two Outbuildings
- Garage - Two Floors
- Cottage





Broad Common Road, Hurst, RG10

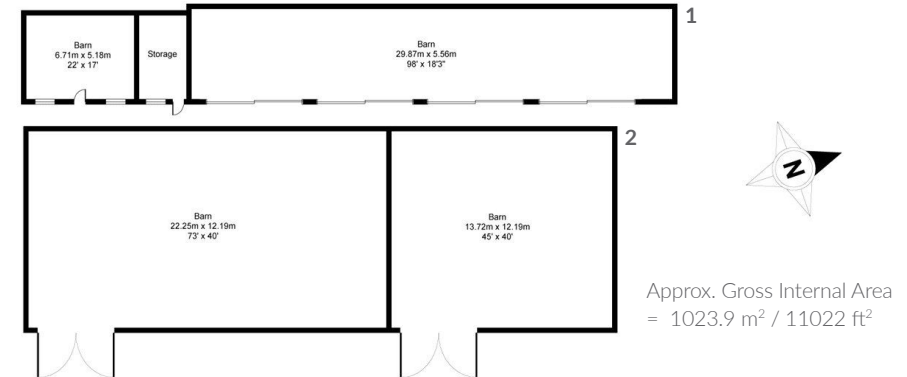
Approx. Gross Internal Area
= 1427 m² / 15356 ft²



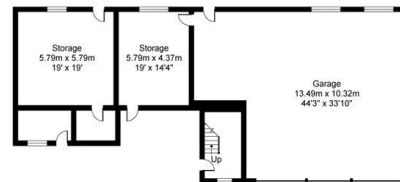
Cottage



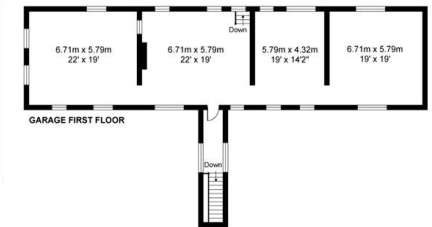
Outbuildings



Garage Ground Floor



Garage First Floor



Whilst every attempt has been made to ensure the accuracy of the floor plan, measurements are approximate and not to scale. No guarantee is given on the total square footage of the property quoted on the plan. Figures given are for guidance. Plan is for illustration purposes only, not to be used for valuations.