



Westbourne Park Villas, W2

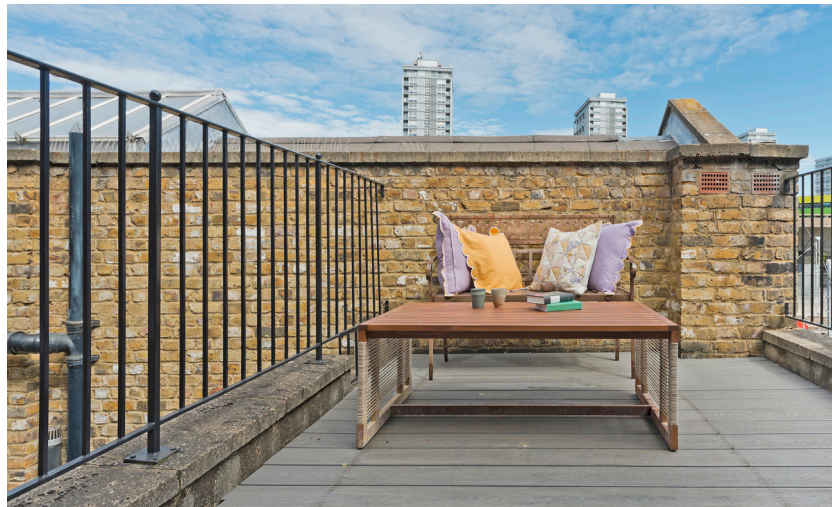


Westbourne Park Villas, W2

Stunning maisonette on this fashionable street in the Westbourne Park area of Notting Hill just across from Tom Conran's famous restaurant 'The Cow' and only a short walk from Westbourne Grove, Golborne Road and Portobello Road.

Benefitting from two terraces and a superb open plan living space this is a very cool apartment which has been refurbished throughout to a high standard in a contemporary style. Royal Oak and Westbourne Park stations are less than a five minute walk.

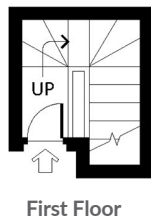
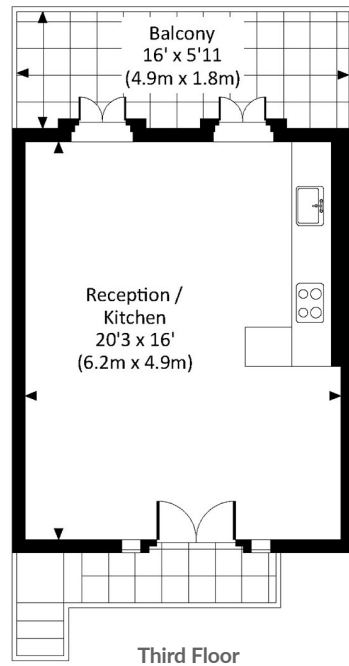
- Duplex Loft-style Apartment
- Large Open Plan Living Space
- Two Double Bedrooms
- Two Terraces
- EPC: C
- Council Tax Band: G



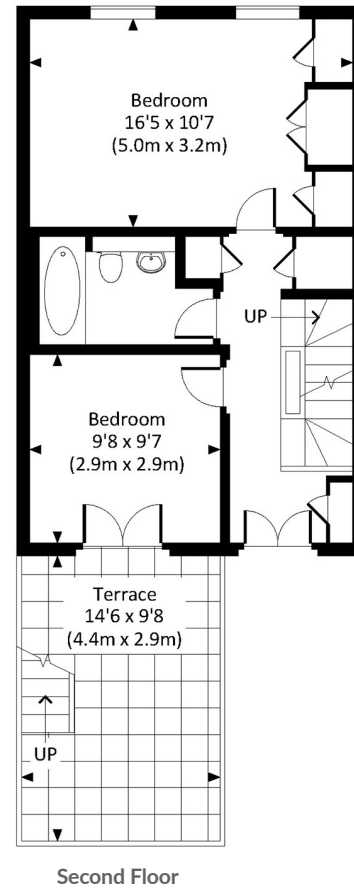


Westbourne Park Villas, W2

Local Authority **City of Westminster**



Approx. Gross Internal Area
= 74.8 m² / 805 ft²



Whilst every attempt has been made to ensure the accuracy of the floor plan, measurements are approximate and not to scale. No guarantee is given on the total square footage of the property quoted on the plan. Figures given are for guidance. Plan is for illustration purposes only, not to be used for valuations.