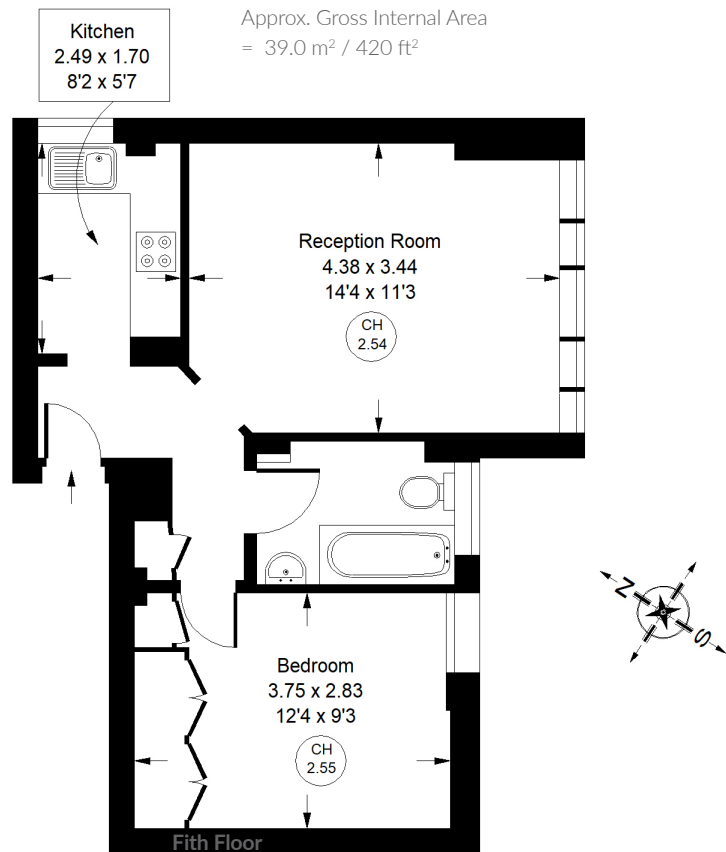




Chepstow Court, W11



Chepstow Court, W11 Leasehold

Local Authority **Royal Borough of Kensington & Chelsea**

- One Bedroom
- Communal Heating and Hot Water
- Wooden Flooring
- Lift
- EPC Rating: C
- Council Tax Band: E
- Service Charge: £2820.23 per annum
- Remaining Lease: 135 years



Whilst every attempt has been made to ensure the accuracy of the floor plan, measurements are approximate and not to scale. No guarantee is given on the total square footage of the property quoted on the plan. Figures given are for guidance. Plan is for illustration purposes only, not to be used for valuations.