



Connells

Seattle House The Moorings
Hockley BIRMINGHAM

Seattle House The Moorings Hockley BIRMINGHAM B18 5SP

for sale
£130,000



Property Description

Stylish 2-Bedroom Apartment with Parking in The Moorings, Seattle House

Welcome to this beautifully presented 2-bedroom, 1-bathroom apartment located in the sought-after development of The Moorings at Seattle House. This modern home offers a perfect blend of comfort and convenience, ideal for professionals, couples, or small families.

Step inside to a spacious open-plan living and dining area, filled with natural light and finished with contemporary touches throughout. The modern kitchen comes fully fitted with sleek cabinetry and integrated appliances, making it both functional and stylish.

Both bedrooms are well-proportioned, with ample space for storage and furnishings, while the bathroom features a clean, modern design with walk-in shower.

Additional highlights include allocated parking, secure entry, all within a well-maintained and peaceful residential development. Located just moments from local amenities, transport links, and waterside walks, this property offers an exceptional lifestyle in a prime location.

Don't miss the opportunity to make this stunning apartment your new home. Contact us today to arrange a viewing.

Approach

Communal entrance with access to all floors.
No lift access available.

Entrance Hall

Having laminate flooring, storage area, intercom system and radiator.

Open Plan Living

21' 1" x 16' 7" (6.43m x 5.05m)

Fitted kitchen with wall and base units, work surfaces, sink and drainer, cooker point, integrated fridge freezer and washing machine, lino flooring and door leading to balcony.

Bedroom One

11' 7" x 12' (3.53m x 3.66m)

Having carpet flooring, fitted wardrobes, radiator and double glazed window.

Bedroom Two

7' x 12' 9" (2.13m x 3.89m)

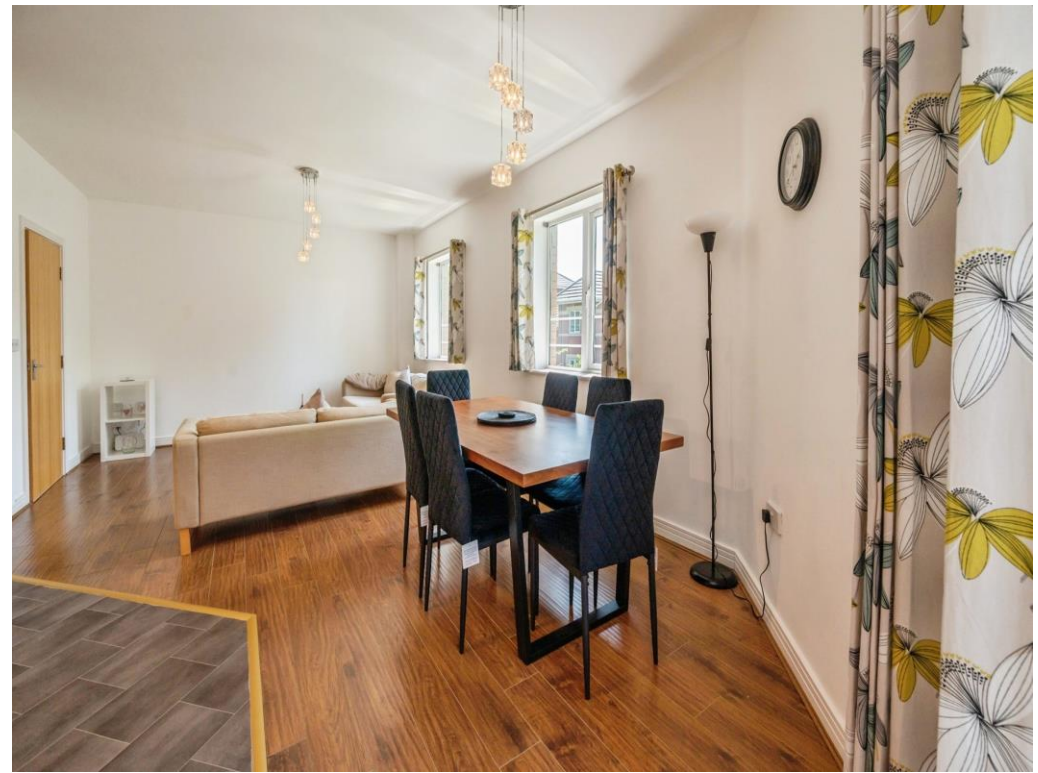
Having carpet flooring, radiator and double glazed window.

Shower Room

Shower cubicle, wash hand basin, low level w.c, towel rail heater, lino flooring.

Agents Note

No lift access available.









This floor plan is for illustrative purposes only. It is not drawn to scale. Any measurements, floor areas (including any total floor area), openings and orientation are approximate. No details are guaranteed, they cannot be relied upon for any purpose and they do not form part of any agreement. No liability is taken for any error, omission or misstatement. A party must rely upon its own inspection(s). Powered by www.focalagent.com

To view this property please contact Connells on

T 0121 212 0800
E birminghamcity@connells.co.uk

145 Great Charles Street Queensway
 BIRMINGHAM B3 3LP

EPC Rating: C

Council Tax
 Band: C

Service Charge: Ask
 Agent

Ground Rent:
 Ask Agent

Tenure: Leasehold

view this property online connells.co.uk/Property/DIG112327

This is a Leasehold property. We are awaiting further details about the Term of the lease. For further information please contact the branch. Please note additional fees could be incurred for items such as Leasehold packs.



1. MONEY LAUNDERING REGULATIONS Intending purchasers will be asked to produce identification documentation at a later stage and we would ask for your co-operation in order that there will be no delay in agreeing the sale. 2. These particulars do not constitute part or all of an offer or contract. 3. The measurements indicated are supplied for guidance only and as such must be considered incorrect. Potential buyers are advised to recheck measurements before committing to any expense. 4. We have not tested any apparatus, equipment, fixtures, fittings or services and it is in the buyers interest to check the working condition of any appliances.

Connells Residential is registered in England and Wales under company number 1489613, Registered Office is Cumbria House, 16-20 Hockliffe Street, Leighton Buzzard, Bedfordshire, LU7 1GN. VAT Registration Number is 500 2481 05.

See all our properties at www.connells.co.uk | www.rightmove.co.uk | www.zoopla.co.uk

Property Ref: DIG112327 - 0004