





Property Description

A Very Well Presented Detached Family Home Conveniently Situated in a Delightful Sought After Cul de Sac Just Off Robin Hood Lane, Built in Late 2009 by Damson Homes to a Very High Standard

UPVC Double Glazing and a Gas Central Heating System, Two/Three Reception Rooms and Luxury Fitted Kitchen with Built-in Neff Appliances, Four Double Bedrooms, Designer Bathroom and En suite Shower Room, Off Road Parking, Converted Integral Garage and Delightful Rear Garden, EER – "B"

The property is set back from the road behind a foregarden with garden wall, planted area and block paved driveway providing off road parking.

Entrance Hall

Storage, radiator and laminate flooring,

Downstairs W/C

Lounge

16' 4" x 20' (4.98m x 6.10m)

Laminate flooring, fireplace and door to garden.

Dining Room

Laminate flooring radiator, blinds and radiator.

Reception Room 3

10' 2" x 16' 8" (3.10m x 5.08m)

Carpet and radiator.

Kitchen

Kitchen comprising of a range of wall and base units, sink and drainer, oven with hob and extractor fan overhead.

Landing

Carpet and loft access

Bedroom One

17' 6" x 16' 1" (5.33m x 4.90m)

carpet and radiator.

En Suite

shower, basin, w/c and towel rail.

Bedroom Two

11' 11" x 18' 5" (3.63m x 5.61m)

carpet and radiator.

Bedroom Three

9' 4" x 11' 8" (2.84m x 3.56m)

carpet and radiator

Bedroom Four

11' 6" x 16' 1" (3.51m x 4.90m)

carpet and radiator.

Bathroom

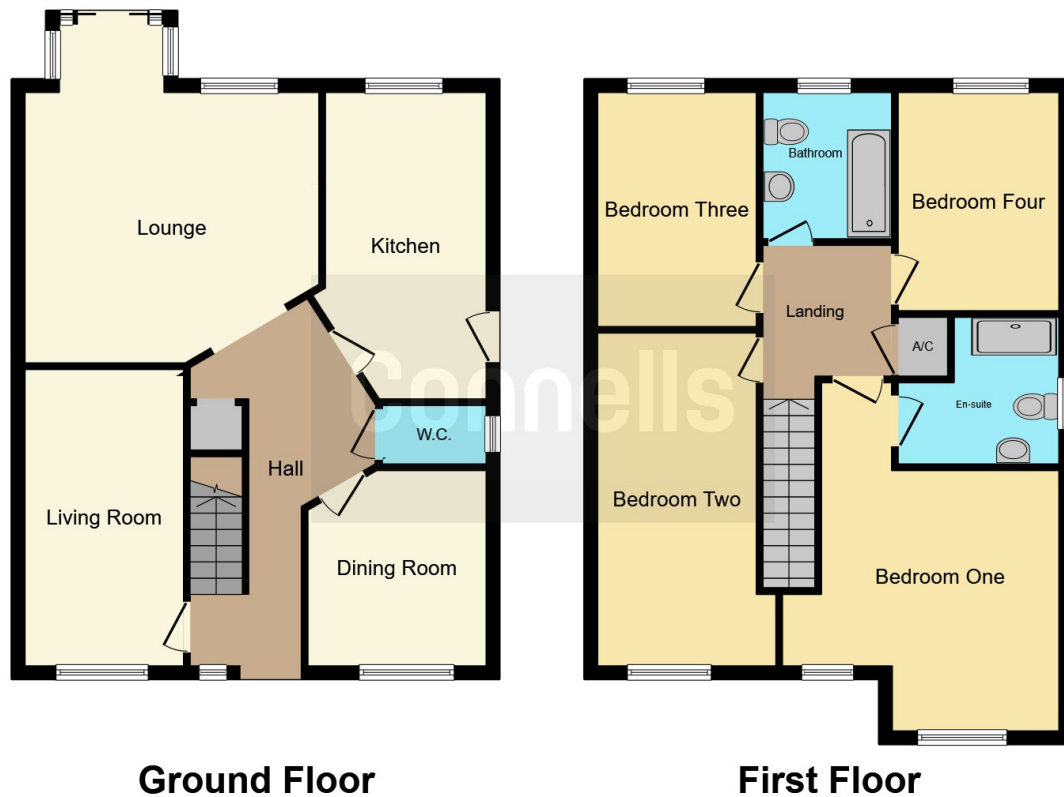
Bath with shower overhead, w/c, wash hand basin and towel rail.

External

Front - Drive and access to garage.

Rear - enclosed rear garden with detached outbuilding.





This floor plan is for illustrative purposes only. It is not drawn to scale. Any measurements, floor areas (including any total floor area), openings and orientation are approximate. No details are guaranteed, they cannot be relied upon for any purpose and they do not form part of any agreement. No liability is taken for any error, omission or misstatement. A party must rely upon its own inspection(s). Powered by www.focalagent.com

To view this property please contact Connells on

T 0121 212 0800
E birminghamcity@connells.co.uk

145 Great Charles Street Queensway
 BIRMINGHAM B3 3LP

EPC Rating: C

view this property online connells.co.uk/Property/DIG112372



Tenure: Freehold



1. MONEY LAUNDERING REGULATIONS Intending purchasers will be asked to produce identification documentation at a later stage and we would ask for your co-operation in order that there will be no delay in agreeing the sale. 2. These particulars do not constitute part or all of an offer or contract. 3. The measurements indicated are supplied for guidance only and as such must be considered incorrect. Potential buyers are advised to recheck measurements before committing to any expense. 4. We have not tested any apparatus, equipment, fixtures, fittings or services and it is in the buyers interest to check the working condition of any appliances.

Connells Residential is registered in England and Wales under company number 1489613, Registered Office is Cumbria House, 16-20 Hockliffe Street, Leighton Buzzard, Bedfordshire, LU7 1GN. VAT Registration Number is 500 2481 05.

See all our properties at www.connells.co.uk | www.rightmove.co.uk | www.zoopla.co.uk

Property Ref: DIG112372 - 0002