



East Timber Yard Pershore Street Birmingham B5 6PA

for sale offers in the region of
£195,000



Property Description

Timber Yard hosts a range of exclusive on-site residents' facilities, which really are second to none. The concierge service offers you extra help with everything from deliveries to restaurant bookings. With access to the on-site gym, you can stay fit and healthy whatever your schedule. And when it's time to relax, you can either make use of the club lounge or enjoy exclusive use of the residents' cinema room where you can enjoy a screening of your favourite film.

The location is pedestrian friendly with Birmingham New Street and Birmingham Moor Street walkable within 10 minutes. Timber Yard is surrounded by retail and leisure facilities including The Glee Club and Birmingham Hippodrome within a 5 minute walk and the O2 Academy and The Alexandra both within 10 minutes. With the Birmingham Indoor Markets accessible within a 5 minute walk, the Bullring shopping centre within a 10 minute walk and the Mailbox within 15 minutes there isn't a better location for retail enthusiasts.

Kitchen

11' 3" x 21' 4" (3.43m x 6.50m)

Kitchen comprising of a range of wall and base units sink and drainer, oven with hob and extractor fan overhead.

Utility

7' 8" x 3' 6" (2.34m x 1.07m)

Counter

Bedroom One

9' 1" x 16' (2.77m x 4.88m)

Laminate flooring, blinds, fitted wardrobes and heater.

Bathroom

Bath with shower overhead, vanity mirror, w.c, wash hand basin, cabinet. towel rack and tiled.

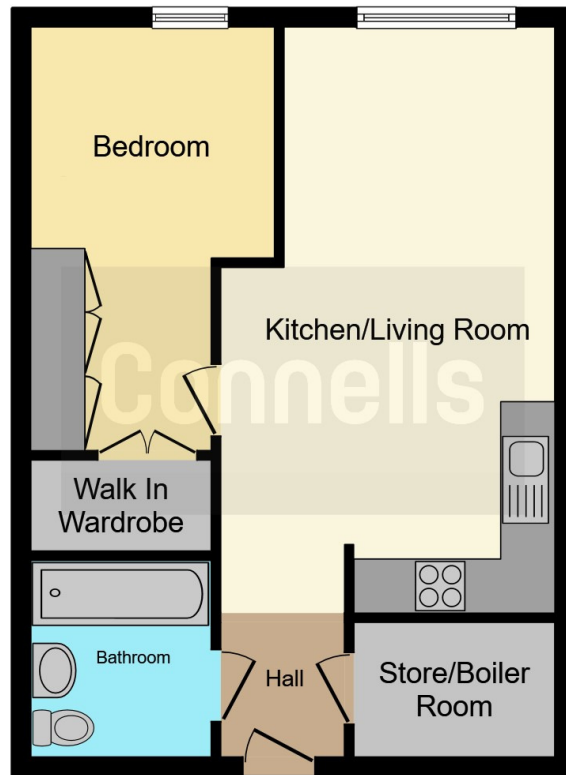
Entrance Hall

Doors off to;

Property Details

Communal entrance accessing all floors.





This floor plan is for illustrative purposes only. It is not drawn to scale. Any measurements, floor areas (including any total floor area), openings and orientation are approximate. No details are guaranteed, they cannot be relied upon for any purpose and they do not form part of any agreement. No liability is taken for any error, omission or misstatement. A party must rely upon its own inspection(s). Powered by www.focalagent.com

To view this property please contact Connells on

T 0121 212 0800
E birminghamcity@connells.co.uk

145 Great Charles Street Queensway
 BIRMINGHAM B3 3LP

EPC Rating: B

view this property online connells.co.uk/Property/DIG111909

This is a Leasehold property. We are awaiting further details about the Term of the lease. For further information please contact the branch. Please note additional fees could be incurred for items such as Leasehold packs.



Tenure: Leasehold



1. MONEY LAUNDERING REGULATIONS Intending purchasers will be asked to produce identification documentation at a later stage and we would ask for your co-operation in order that there will be no delay in agreeing the sale. 2. These particulars do not constitute part or all of an offer or contract. 3. The measurements indicated are supplied for guidance only and as such must be considered incorrect. Potential buyers are advised to recheck measurements before committing to any expense. 4. We have not tested any apparatus, equipment, fixtures, fittings or services and it is in the buyers interest to check the working condition of any appliances.

Connells Residential is registered in England and Wales under company number 1489613, Registered Office is Cumbria House, 16-20 Hockliffe Street, Leighton Buzzard, Bedfordshire, LU7 1GN. VAT Registration Number is 500 2481 05.

See all our properties at www.connells.co.uk | www.rightmove.co.uk | www.zoopla.co.uk

Property Ref: DIG111909 - 0002