

for sale

offers in the region of **£180,000**



## St. Catherines Close Birmingham B15 2FN

### MODERN ONE BEDROOM APARTMENT -

An ideal first time buy or buy to let purchase. Property has hallway, lounge, kitchen, master bedroom, shower room. City Centre location, situated in a cul-de-sac location.





# St. Catherines Close Birmingham B15 2FN

## Entrance Hall

Having tiled flooring, intercom system, radiator and storage.

## Kitchen and Living Area

23' 1" x 13' 6" ( 7.04m x 4.11m )

This beautifully presented kitchen comprising of a range of wall and base units, worktops over, stainless steel sink and drainer, oven with hob and extractor fan overhead, integrated fridge freezer, washing machine and dishwasher, room with boiler and storage, open plan to lounge with two radiators and Juliet Balcony.

## Bedroom One

13' 2" x 11' ( 4.01m x 3.35m )

Having carpet flooring, radiator, Juliet balcony and fitted

wardrobe.

## Shower Room

This high spec modern bathroom suite with shower cubicle, glass shower screen, low level w/c, heated towel rail, vanity wash hand basin, fully tiled, and storage.

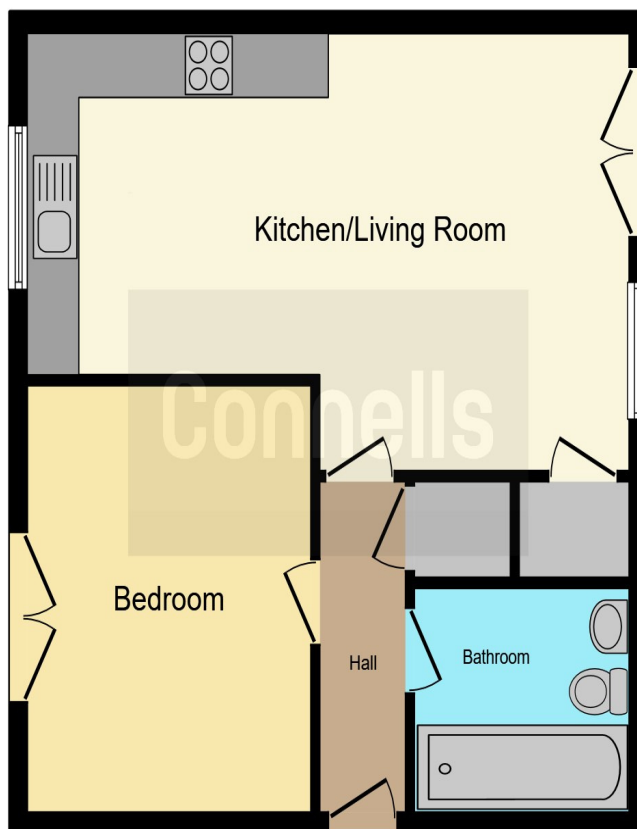
## Property Details

Allocated parking space.









This floor plan is for illustrative purposes only. It is not drawn to scale. Any measurements, floor areas (including any total floor area), openings and orientation are approximate. No details are guaranteed, they cannot be relied upon for any purpose and they do not form part of any agreement. No liability is taken for any error, omission or misstatement. A party must rely upon its own inspection(s). Powered by [www.focalagent.com](http://www.focalagent.com)

To view this property please contact Connells on

**T 0121 212 0800**  
**E [birminghamcity@connells.co.uk](mailto:birminghamcity@connells.co.uk)**

145 Great Charles Street Queensway  
 BIRMINGHAM B3 3LP

Property Ref: DIG111338 - 0004

**Tenure:** Leasehold

**EPC Rating:** C

**view this property online** [connells.co.uk/Property/DIG111338](http://connells.co.uk/Property/DIG111338)

This is a Leasehold property. We are awaiting further details about the Term of the lease. For further information please contact the branch. Please note additional fees could be incurred for items such as Leasehold packs.

1. MONEY LAUNDERING REGULATIONS Intending purchasers will be asked to produce identification documentation at a later stage and we would ask for your co-operation in order that there will be no delay in agreeing the sale. 2. These particulars do not constitute part or all of an offer or contract. 3. The measurements indicated are supplied for guidance only and as such must be considered incorrect. Potential buyers are advised to recheck measurements before committing to any expense. 4. We have not tested any apparatus, equipment, fixtures, fittings or services and it is in the buyers interest to check the working condition of any appliances.

Connells Residential is registered in England and Wales under company number 1489613, Registered Office is Cumbria House, 16-20 Hockliffe Street, Leighton Buzzard, Bedfordshire, LU7 1GN. VAT Registration Number is 500 2481 05.



see all our properties at [www.connells.co.uk](http://www.connells.co.uk) | [www.rightmove.co.uk](http://www.rightmove.co.uk) | [www.zoopla.co.uk](http://www.zoopla.co.uk)