

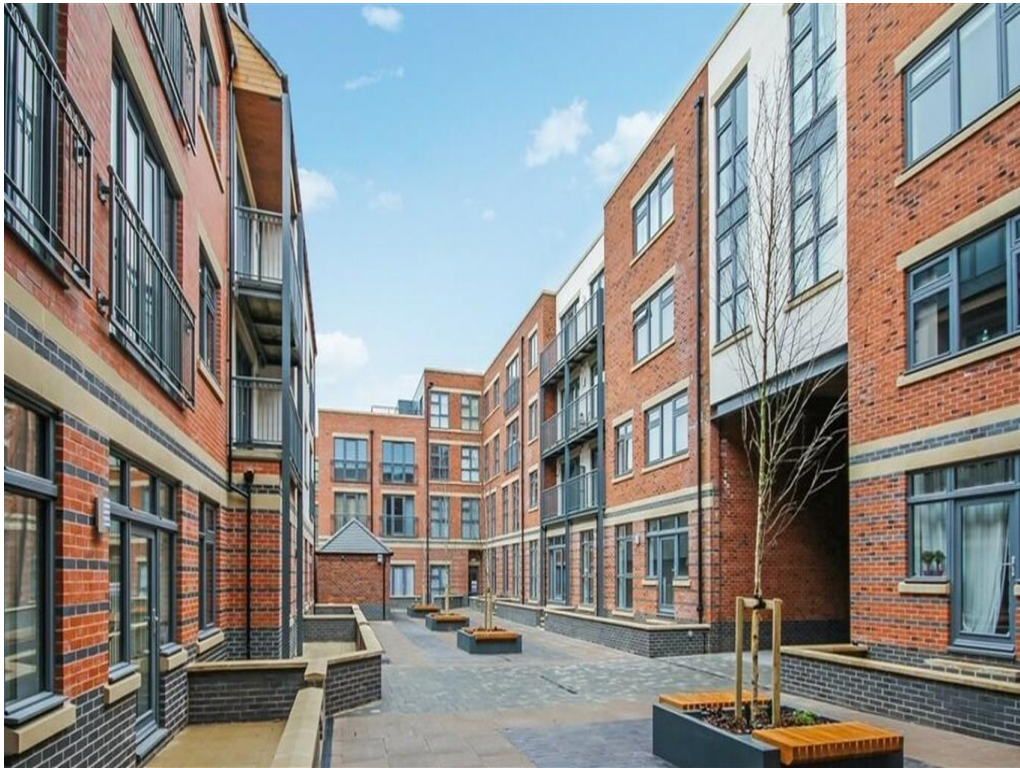


Connells

Metalworks Apartments Warstone Lane
Birmingham

Metalworks Apartments Warstone Lane Birmingham B18 6PX

for sale offers in the region of
£210,000



Property Description

Here at Connells Birmingham City office we offer free advice on the house buying, selling, investing and letting process. Whilst also offering a large range of brand new build properties. We also offer mortgage advise should you need it whether you're a purchaser, seller or investor. Please contact us for more information.

A BEAUTIFULLY PRESENTED MODERN APARTMENT - Comprising of an open plan lounge/kitchen with balcony overlooking the communal grounds, 2 double bedrooms, 1 bathroom and allocated parking. Property also has a concierge service on site.

Entrance

Lifts and stairs leading to this apartment.

Hallway

Having three recessed ceiling spotlights with chrome surrounds, wall mounted entry phone, wall mounted alarm control panel.

With doors leading to Kitchen/ Diner, Bedroom One & Two and Bathroom

Open Plan Lounge Kitchen

27' 9" max x 9' 2" max (8.46m max x 2.79m max)

Open plan lounge with dining space which leads onto the fully fitted kitchen complete with integrated appliances to include a dishwasher, washer drier, electric oven and hob with cooker hood over and extractor fan. Four recessed ceiling spotlights with chrome surrounds; three down lighters underneath wall cupboard.

Bedroom one

18' 5" max x 9' 7" max (5.61m max x 2.92m max)

With double glazed window unit.

Bedroom Two

15' max x 8' 8" max (4.57m max x 2.64m max)

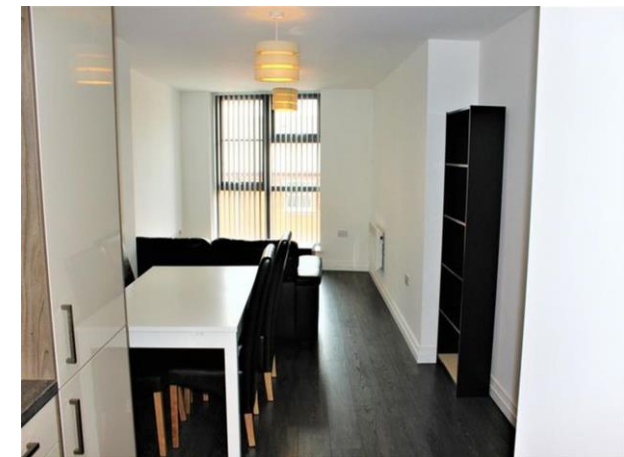
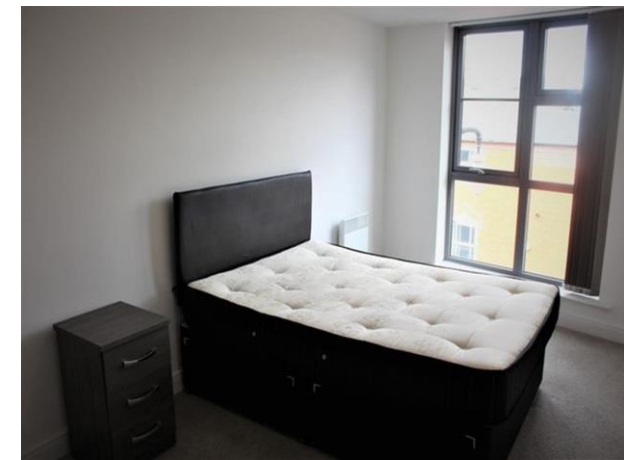
With double glazed window unit.

Bathroom

Complete with bath and shower, heated towel rail, sink with vanity unit. Wall mounted mirror and electric shaver point. Three recessed ceiling spotlights with chrome surrounds. Wall mounted chrome heated towel rail.

Communal Garden Area





To view this property please contact Connells on

T 0121 212 0800
E birminghamcity@connells.co.uk

145 Great Charles Street Queensway
BIRMINGHAM B3 3LP

EPC Rating: C

view this property online connells.co.uk/Property/DIG110629

This is a Leasehold property with details as follows; Term of Lease 999 years from 01 Jan 2010. Should you require further information please contact the branch. Please Note additional fees could be incurred for items such as Leasehold packs.

Tenure: Leasehold



1. MONEY LAUNDERING REGULATIONS Intending purchasers will be asked to produce identification documentation at a later stage and we would ask for your co-operation in order that there will be no delay in agreeing the sale. 2. These particulars do not constitute part or all of an offer or contract. 3. The measurements indicated are supplied for guidance only and as such must be considered incorrect. Potential buyers are advised to recheck measurements before committing to any expense. 4. We have not tested any apparatus, equipment, fixtures, fittings or services and it is in the buyers interest to check the working condition of any appliances.

Connells Residential is registered in England and Wales under company number 1489613, Registered Office is Cumbria House, 16-20 Hockliffe Street, Leighton Buzzard, Bedfordshire, LU7 1GN. VAT Registration Number is 500 2481 05.

See all our properties at www.connells.co.uk | www.rightmove.co.uk | www.zoopla.co.uk

Property Ref: DIG110629 - 0008