



Connells

Weston Lane
Birmingham



Property Description

Here at Connells Birmingham City office we offer free advice on the house buying, selling, investing and letting process. Whilst also offering a large range of brand new build properties. We also offer mortgage advise should you need it whether you're a purchaser, seller or investor. Please contact us for more information.

AN IDEAL FIRST TIME PURCHASE - A three bedroom mid terrace property, having two reception rooms, three spacious bedrooms, modern kitchen, ground floor bathroom & enclosed rear garden.

Entrance Hall

Double glazed porch with laminate flooring

Lounge

12' 1" x 13' 4" (3.68m x 4.06m)
Carpeted gas fire bay window and radiator access to second reception room.

Second Reception Room

12' 1" x 12' 7" (3.68m x 3.84m)
storage cupboard to the right carpeted, radiator, double glazed window to the rear.

Kitchen

10' 5" x 6' 5" (3.17m x 1.96m)
Newly fitted kitchen with laminate flooring, gas hob and oven.

Bathroom

bath, wc, wash hand basin and shower tiled with lino floorng and window tho the rear

Bedroom One

11' 6" x 11' 9" (3.51m x 3.58m)
Double glazed window to the front, radiator and carpeted.

Bedroom Two

8' 1" x 11' 4" (2.46m x 3.45m)

Double glazed window to the front, radiator and carpeted. built in wardrobe/storage cupboard access to loft via storage.

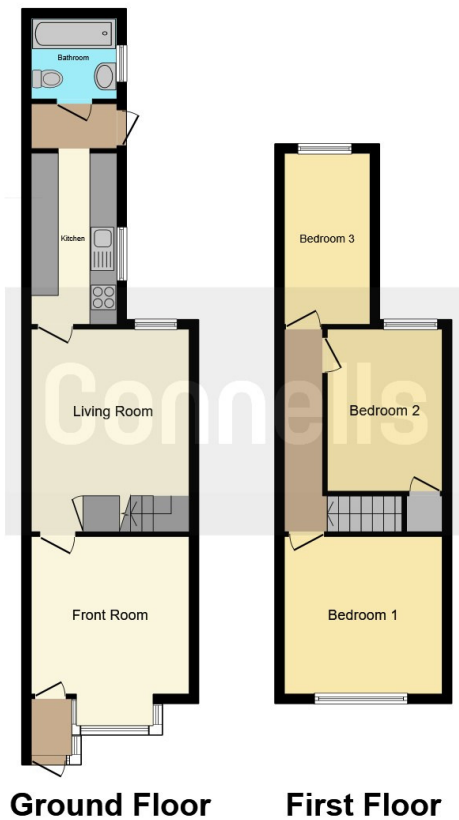
Bedroom Three

11' 4" x 6' 5" (3.45m x 1.96m)
Double glazed window to the rear, radiator and carpeted and storage cupboard.

Bathroom

bath, shower W/C and wash hand basin.





Ground Floor

First Floor

This floorplan is for illustrative purposes only and is not drawn to scale. Measurements, floor-areas, openings and orientations are approximate. They should not be relied upon for any purpose and do not form any part of an agreement. No liability is taken for any error or mis-statement. All parties must rely on their own inspections.

To view this property please contact Connells on

T 0121 212 0800
E birminghamcity@connells.co.uk

145 Great Charles Street Queensway
 BIRMINGHAM B3 3LP

EPC Rating: D

view this property online connells.co.uk/Property/DIG110163



Tenure: Freehold



1. MONEY LAUNDERING REGULATIONS Intending purchasers will be asked to produce identification documentation at a later stage and we would ask for your co-operation in order that there will be no delay in agreeing the sale. 2. These particulars do not constitute part or all of an offer or contract. 3. The measurements indicated are supplied for guidance only and as such must be considered incorrect. Potential buyers are advised to recheck measurements before committing to any expense. 4. We have not tested any apparatus, equipment, fixtures, fittings or services and it is in the buyers interest to check the working condition of any appliances.

Connells Residential is registered in England and Wales under company number 1489613, Registered Office is Cumbria House, 16-20 Hockliffe Street, Leighton Buzzard, Bedfordshire, LU7 1GN. VAT Registration Number is 500 2481 05.

See all our properties at www.connells.co.uk | www.rightmove.co.uk | www.zoopla.co.uk

Property Ref: DIG110163 - 0003