



Rother Crescent, Gossops Green

Guide Price £350,000 - £360,000

**MANSELL
McTAGGART**
Trusted since 1947





Rother Crescent, Gossops Green

- Mid terrace family home
- Three bedrooms
- Redesigned and upgraded by the current owners
- Light and airy entrance hall leading to refitted kitchen/breakfast room
- Bright and spacious living room
- Refitted family bathroom
- Private landscaped 60' x 15' rear garden with timber outbuilding with light and power
- Council Tax Band 'C' and EPC 'C'

A redesigned and upgraded three bedroom terrace family home, situated on an elevated position in the sought-after area of Gossops Green.

The property is approached by a footpath leading to the front door flanked by shrub and flower beds. The entrance hall is of a good size with front door, ample space for shoes and coats. The light and airy living/dining room is situated on the left-hand side of the property with ample space for three and two seater sofas, oak effect flooring and access to an open plan kitchen/breakfast room. The kitchen is fitted with an attractive of wall and base units, sink unit, roll top work surfaces over, space for gas oven, space for dishwasher, fridge/freezer, plumbing and space for washing machine, light oak flooring and is partly tiled.





Rother Crescent, Gossops Green

Stairs from the entrance hall lead to first floor landing giving access to all three bedroom, refitted family bathroom and airing cupboard. There are two good sized double bedrooms – both with fitted wardrobes with plenty of space for a king size bed and a further single bedroom. The family bathroom is refitted with panelled bath with remote control shower unit, low level WC, pedestal wash hand basin with storage under, heated towel rail, recessed spotlights, partly tiled with attractive oversized tiling.

Outside the property enjoys the benefit from a 60' x 15' landscaped rear garden where patio abuts the rear of the property, with steps leading to elevated sun terrace and wooden decking, with large timber outbuilding with light and power, the whole enclosed by wooden panelled fencing.

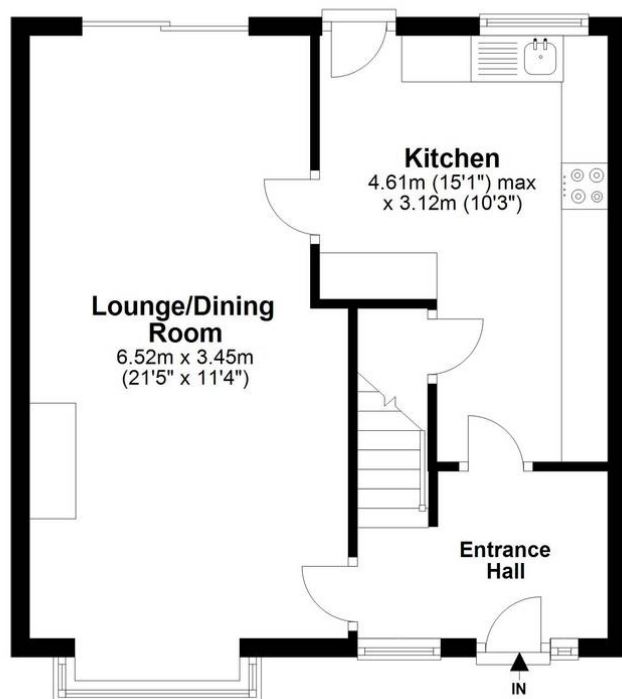
Internal viewings are highly recommended to avoid disappointment.

Agents note - Since photographs have been taken two rooms have been repainted.



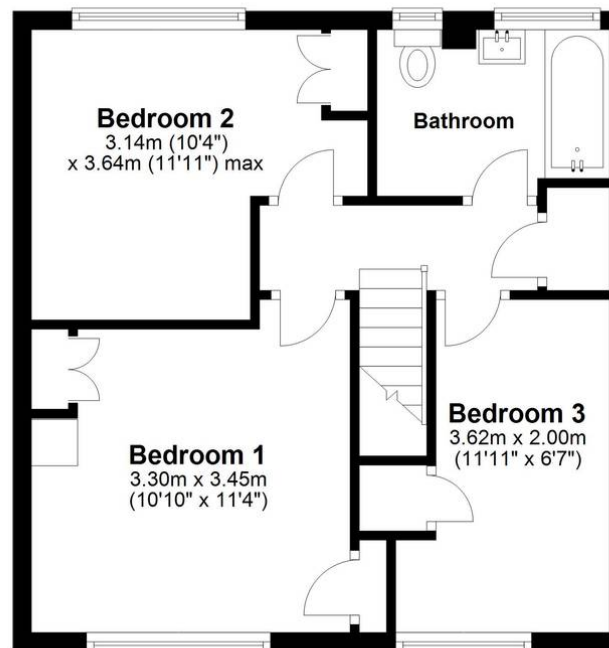
Ground Floor

Approx. 41.2 sq. metres (443.7 sq. feet)



First Floor

Approx. 41.1 sq. metres (442.1 sq. feet)



Total area: approx. 82.3 sq. metres (885.9 sq. feet)

Whilst every attempt has been made to ensure the accuracy of the floor plan contained here, measurements of doors, windows, rooms and any other item are approximate and no responsibility is taken for any error, omission, or misstatement. This plan is for illustrative purposes only and should only be used as such by any prospective purchaser. Plan produced using PlanUp.

Mansell McTaggart Crawley

35 The Broadway, West Sussex – RH10 1HD

01293 533333

crawley@mansellmctaggart.co.uk

www.mansellmctaggart.co.uk/branch/crawley/

Consumer Protection from Unfair Trading Regulations 2008 We have not tested any apparatus, equipment, fixtures, fittings or services and so cannot verify that they are in working order or fit for purpose. You are advised to obtain verification from your solicitor or surveyor. References to the tenure of a property are based on information supplied by the seller. We have not had sight of the title documents and a buyer is advised to obtain verification from their solicitor. Items shown in photographs are not included unless specifically mentioned within the sales particulars, but may be available by separate negotiation.