



1 Lywood Drive Sittingbourne, ME10 2FT

Greenleaf Property Services are delighted to offer to let this ground floor, two bedroom Apartment located close to Sittingbourne High Street and Train Station. This property offers entrance hall, lounge, modern fitted kitchen with dishwasher, two double bedrooms - master with en-suite, and a main bathroom. Allocated parking for one car.

In order to reserve a property you will be required to pay a holding deposit equivalent to one weeks rent. This will be refunded once checks are complete unless false or misleading information is provided, a Right to Rent check fails or you withdraw from the property. It can, with agreement be put towards the first months rent due along with the five week deposit. If you require any further information just give the team a call or email on info@greenleaf-property.co.uk.

Greenleaf are a member of the PRS (property redress scheme) membership number: PRS003992
Greenleaf Property Services Ltd have client money protection – property mark - membership – C0128543

£1,200 Per Month

1 Lywood Drive

Sittingbourne, ME10 2FT

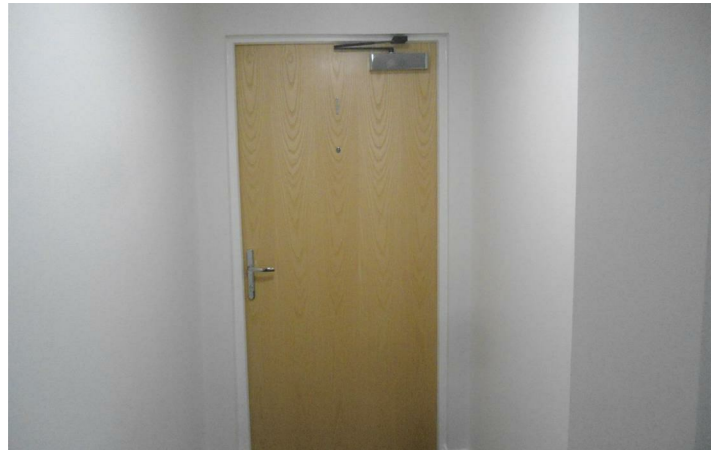


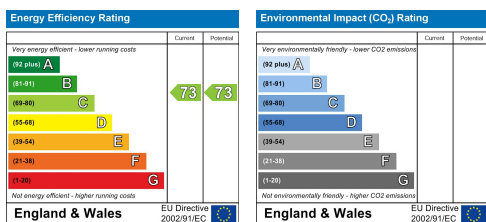
- 2 BEDROOM APARTMENT
- CLOSE TO AMENITIES
- 5 WEEK DEPOSIT £1384.61
- POPULAR LOCATION
- EN SUITE SHOWER ROOM
- AVAILABLE FROM END OF SEPTEMBER
- ALLOCATED PARKING
- 1 WEEK HOLDING DEPOSIT £276.92
- COUNCIL TAX BAND B



[Directions](#)

Tel: 01634730672





Greenleaf Property Services is a trading name of Greenleaf Property Services Limited.
 Registered Office: 281 Wilson Avenue, Rochester Kent ME1 2SS
 Registered No: 06222461 England. VAT No: 908929091

These particulars, whilst believed to be accurate are set out as a general outline only for guidance and do not constitute any part of an offer or contract. Intending purchasers should not rely on them as statements of representation of fact, but must satisfy themselves by inspection or otherwise as to their accuracy. No person in this firm's employment has the authority to make or give any representation or warranty in respect of the property.