

Unit 1 Ballard Court, Tribune Drive Sittingbourne, Kent, ME10 2PG

Greenleaf are delighted to offer for sale, this fantastic industrial unit, 2300sq ft with a 1800sq ft mezzanine level, in Sittingbourne. The unit comes with 5 parking spaces. Fantastic location and opportunity.

B1 & B8 usage, light and industrial warehousing. Viewings available now call us to arrange appointment. Available immediately.

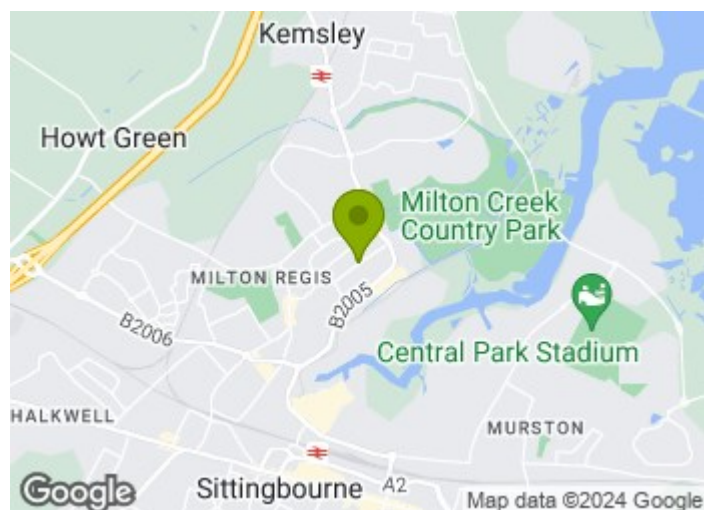
Offers In The Region Of £450,000

Unit 1 Ballard Court, Tribune Drive

Sittingbourne, Kent, ME10 2PG

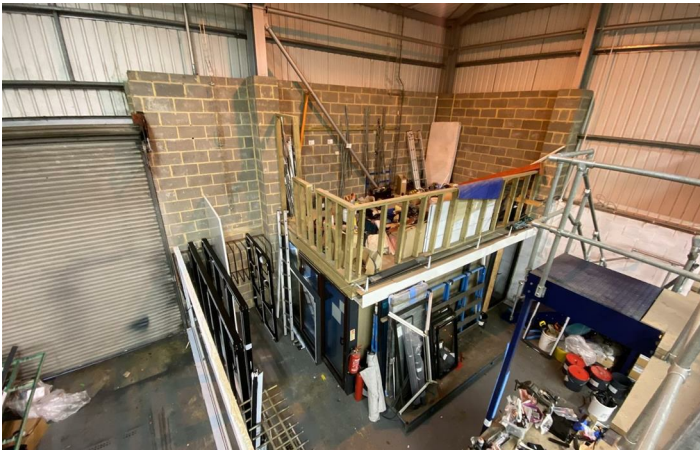
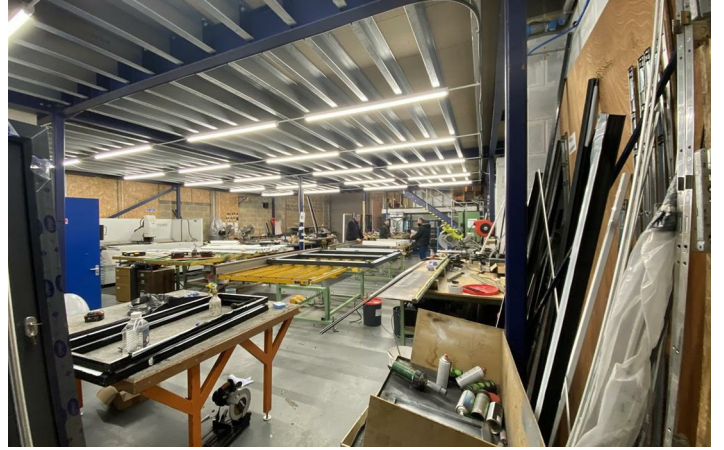


- 2300 sq ft GROUND FLOOR
- 1800 sq ft MEZZANINE
- B1 AND B8 USAGE
- AVAILABLE IMMEDIATELY
- FULL REPAIRING AND INSURING LEASE



[Directions](#)

Tel: 01634730672





Energy Efficiency Rating		Current	Planned
Very energy efficient - lower running costs	(92 plus) A		
	(81-91) B		
	(69-80) C		
	(55-68) D		
	(39-54) E		
	(21-38) F		
	(1-20) G		
Not energy efficient - higher running costs			
England & Wales		EU Directive 2002/91/EC	

Environmental Impact (CO ₂) Rating		Current	Planned
Very environmentally friendly - lower CO ₂ emissions	(92 plus) A		
	(81-91) B		
	(69-80) C		
	(55-68) D		
	(39-54) E		
	(21-38) F		
	(1-20) G		
Not environmentally friendly - higher CO ₂ emissions			
England & Wales		EU Directive 2002/91/EC	

Greenleaf Property Services is a trading name of Greenleaf Property Services Limited.
 Registered Office: 281 Wilson Avenue, Rochester Kent ME1 2SS
 Registered No: 06222461 England. VAT No: 908929091

These particulars, whilst believed to be accurate are set out as a general outline only for guidance and do not constitute any part of an offer or contract. Intending purchasers should not rely on them as statements of representation of fact, but must satisfy themselves by inspection or otherwise as to their accuracy. No person in this firm's employment has the authority to make or give any representation or warranty in respect of the property.