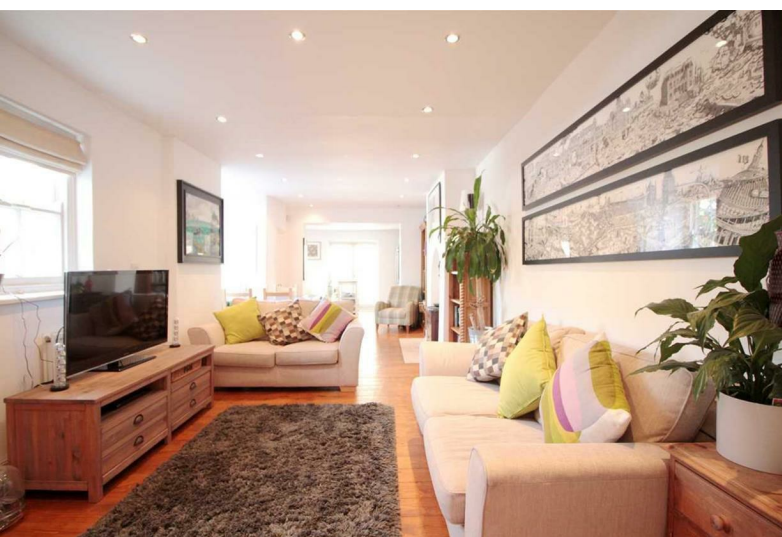


Rosendale Road | Herne Hill, SE24



£2,000 Per Week

- Two bedroom conversion flat • Private garden • Sought after road • Own front door • On street residents permit parking available on application (tbc) • Leasehold covenants may apply

Rosendale Road | Herne Hill, SE24



A beautifully presented two bedroom ground floor maisonette with a private garden and its own front door. The flat features a fabulous huge open plan reception/kitchen/dining room complimented by wooden floors. Modern kitchen comes with plenty of workspace and all necessary appliances (like a dishwasher). There are 2 good sized double bedrooms and a modern bathroom. Ideally located, the flat is moments from beautiful Brockwell Park, Herne Hill Village and mainline station (direct trains to London Victoria & the City). Available from mid February. Please note photos were taken prior to this tenancy. Monthly rent £2,000 - Deposit £2,307
SHORT TERM AND LONG TERM LET ONLY

Energy Efficiency Rating		
	Current	Potential
Very energy efficient - lower running costs		
(92 plus) A		
(81-91) B		
(69-80) C		
(55-68) D		
(39-54) E		
(21-38) F		
(1-20) G		
Not energy efficient - higher running costs		
England & Wales		EU Directive 2002/91/EC
Environmental Impact (CO ₂) Rating		
	Current	Potential
Very environmentally friendly - lower CO ₂ emissions		
(92 plus) A		
(81-91) B		
(69-80) C		
(55-68) D		
(39-54) E		
(21-38) F		
(1-20) G		
Not environmentally friendly - higher CO ₂ emissions		
England & Wales		EU Directive 2002/91/EC

These particulars are designed to provide a guideline only and cannot be relied upon as a statement of fact. The description represents the opinion of the author and is not intended to provide false or misleading information. Any prospective purchaser should make further checks on its accuracy. All measurements are approximate and floorplans are for representation only.



Eden Harper
3 Arlington Parade, Brixton Hill, Brixton, SW2 1RH
0207 274 3111
brixsales@edenharper.com
www.edenharper.com