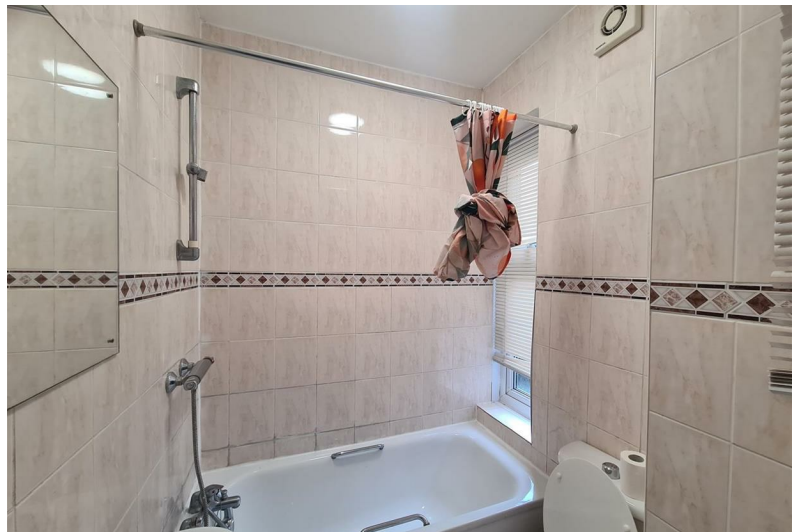


Brixton Hill Court | Brixton, SW2



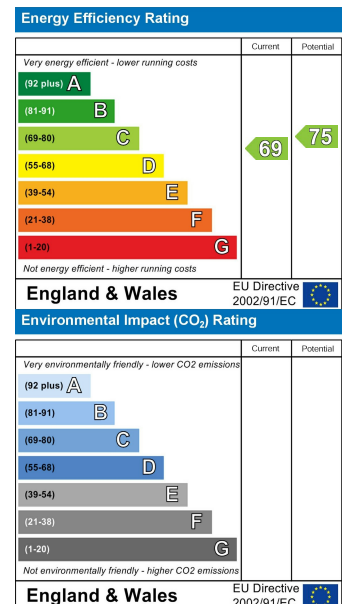
£1,650 PCM

- One bedroom apartment • Popular private block • Excellent location • Ground floor • Leasehold covenants may apply • On street residents permit parking available on application (tbc)

Brixton Hill Court | Brixton, SW2



A spacious one bedroom apartment in this popular private 1930's block close to Brixton town centre. This ground floor property features a bright reception room complimented by a compact but functional kitchen. There is a good sized double bedroom and an en-suite three piece bathroom suite. The property also benefits from security entry phone, double glazed windows and gas central heating. Brixton Hill Court is well maintained and there is a large communal garden to the rear. Ideally located within a short walk of Brixton town centre, which is home to Brixton Village, Ritzy Cinema, Brixton Academy and Pop Brixton as well as various bars and shops. Transport links are excellent and include Brixton tube station, Brixton mainline and there is a bus stop just outside of the block. Available from the 23rd December as part furnished or unfurnished. Monthly rent: £1650. Deposit: £1903. EPC=C. Council tax band C (Lambeth)



These particulars are designed to provide a guideline only and cannot be relied upon as a statement of fact. The description represents the opinion of the author and is not intended to provide false or misleading information. Any prospective purchaser should make further checks on its accuracy. All measurements are approximate and floorplans are for representation only.



Eden Harper
3 Arlington Parade, Brixton Hill, Brixton, SW2 1RH
0207 274 3111
brixsales@edenharper.com
www.edenharper.com