

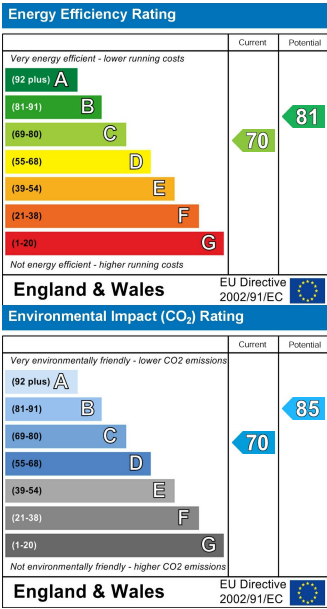
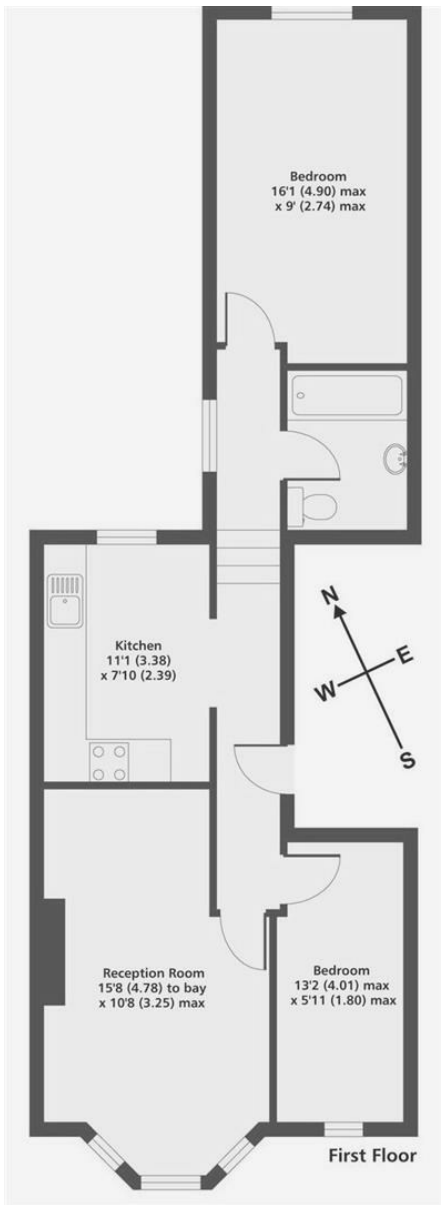
£2,250 PCM

- Two bedroom conversion flat • Beautifully presented • Excellent location • Moments from Clapham Common • Leasehold covenants may apply • On street residents permit parking available on application

Lynette Avenue | London, SW4



A beautifully presented two bedroom conversion flat on this sought after residential road in Abbeville Village. This first floor property features a South facing reception room, 2 double bedrooms (one bigger than the other), separate modern kitchen with a breakfast bar and a pretty bathroom. Ideally located, the property is moments from wide open spaces of Clapham Common, bars & shops in Abbeville Village and Clapham High Street and Clapham South tube station. Available as part furnished from late November. Please note photos were taken prior to the current tenancy. Monthly rent: £2250. Deposit: £2596. EPC=C. Council tax band E (Lambeth).



These particulars are designed to provide a guideline only and cannot be relied upon as a statement of fact. The description represents the opinion of the author and is not intended to provide false or misleading information. Any prospective purchaser should make further checks on its accuracy. All measurements are approximate and floorplans are for representation only.

