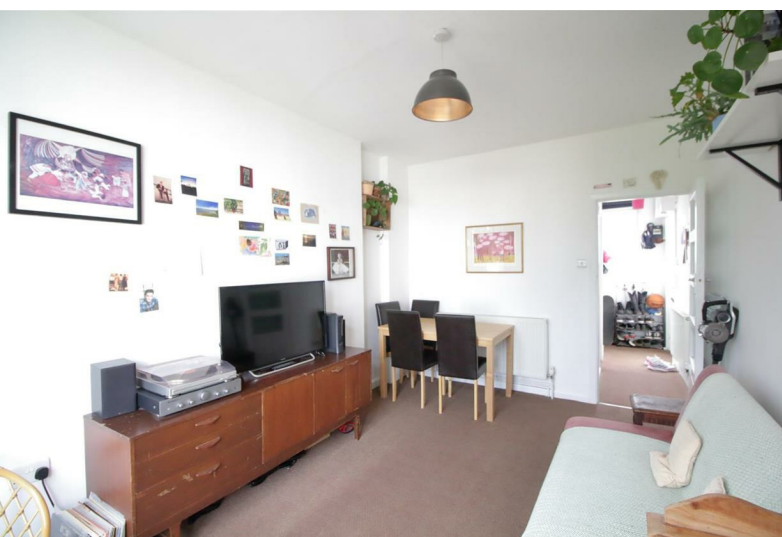


Brixton Hill Court | Brixton Hill, SW2



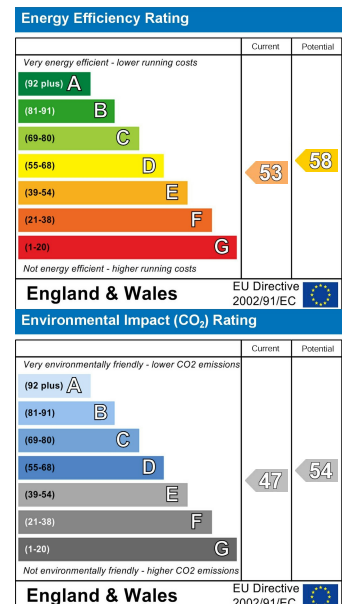
£1,750 PCM

- One bedroom apartment • Popular development • Arranged over 2 floors • Excellent location • On street residents permit parking available on application (TBC) • Leasehold covenants may apply

Brixton Hill Court | Brixton Hill, SW2



Ideally located an usual split-level one bedroom apartment in this sought after private 1930's block close to Brixton tube station. Situated at the rear of the building and arranged over 2 floors, it comprises a good sized reception room as well as a separate modern kitchen downstairs and a big double bedroom and a modern bathroom upstairs. The block is well maintained with security entryphone and communal gardens. Ideally located within walking distance of Brixton town centre, which is home to Brixton Village, Ritzy Cinema and Brixton Academy as well as various bars and shops. Transport links include Brixton Victoria line tube station, mainline station and numerous buses to the City and West End. Available from late July as part furnished or unfurnished. Monthly rent: £1750. Deposit: £2019. Council tax band C (Lambeth). EPC=E.



These particulars are designed to provide a guideline only and cannot be relied upon as a statement of fact. The description represents the opinion of the author and is not intended to provide false or misleading information. Any prospective purchaser should make further checks on its accuracy. All measurements are approximate and floorplans are for representation only.



Eden Harper
3 Arlington Parade, Brixton Hill, Brixton, SW2 1RH
0207 274 3111
brixsales@edenharper.com
www.edenharper.com