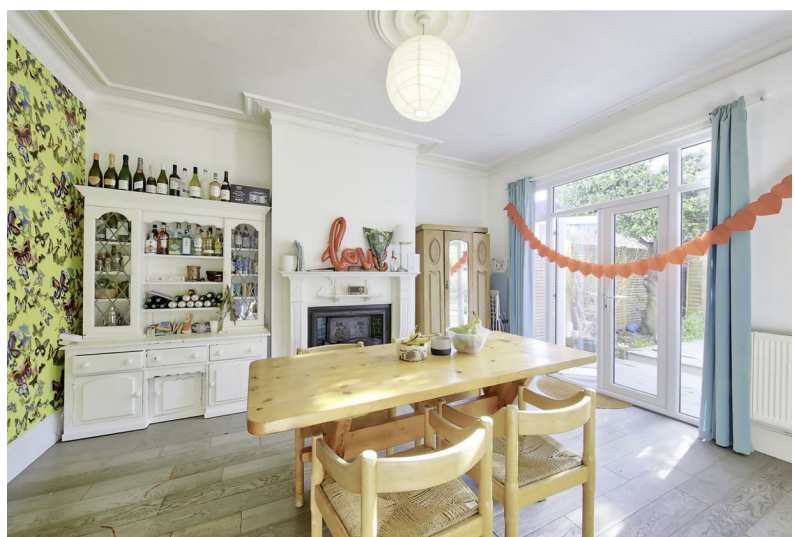


Baytree Road | Brixton, SW2

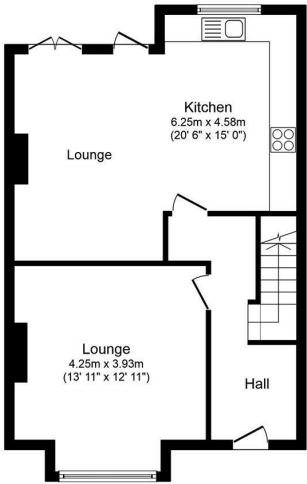


**£3,800 PCM**

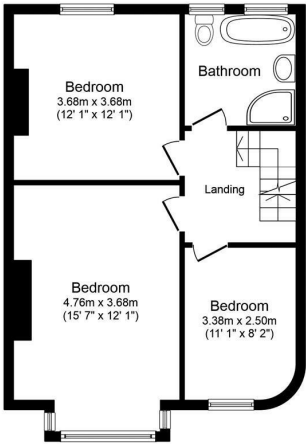
# Baytree Road | Brixton, SW2



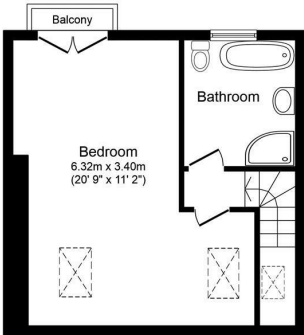
A superb 4 double bedroom terraced house on a quiet residential road moments from Brixton town centre. Arranged over 3 floors, the house is finished to a very high standard. The stained glass front door opens onto a bright and larger than average hallway with original tiled floor. There is a huge reception room with a feature fireplace to the left and straight ahead, piÃƒce de rÃ©sistance, a fabulous kitchen/dining room. It features white glossy cupboards, wooden floors, built-in appliances (including a dishwasher) and a beautiful original feature fireplace. The kitchen/diner opens onto a private South facing decked garden with a shed and a cute bay tree. There are 4 double bedroom upstairs and two splendid bathrooms with baths & separate showers. Ideally located, the house is moments from Brixton town centre, which is home to Brixton Village, the Ritzy and Brixton Academy as well as various bars and shops. Transport links include Victoria line tube station, mainline station and numerous buses to the City and West End. Available immediately as part furnished.  
Monthly rent: £3800. Deposit: £4384. EPC=D. Council tax band E (Lambeth)



Ground Floor



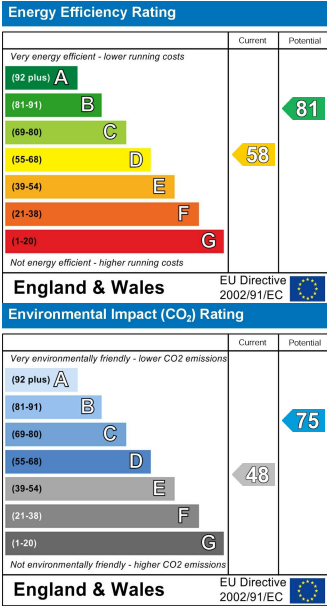
First Floor



Top Floor

Total floor area 153.0 sq. m. (1,647 sq. ft.) approx.  
This plan is for illustration purposes only and may not be representative of the property.  
Plan created for Eden Harper Estate Agents.

Produced by www.keyagent.co.uk



These particulars are designed to provide a guideline only and cannot be relied upon as a statement of fact. The description represents the opinion of the author and is not intended to provide false or misleading information. Any prospective purchaser should make further checks on its accuracy. All measurements are approximate and floorplans are for representation only.



**Eden Harper**  
3 Arlington Parade, Brixton Hill, Brixton, SW2 1RH  
**0207 274 3111**  
brixsales@edenharper.com  
www.edenharper.com